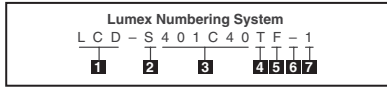




LCDs

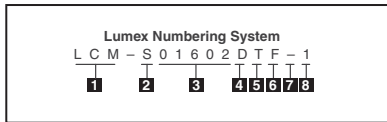


- Type of Display** Liquid Crystal Display
- Operating Temperature** S = Standard (0°C - 50°C)
H = High Temp (-30°C - 75°C)
- Model Number** Alphabetic and Numeric
401C40 = 4 Character x 1 line, 0.40"
4x1C45 = 4.5 Character x 1 line, 0.45"
x - represent 1/2 column
Matrix and Graphic Model
01602D = 16 Characters x Lines, Dot Matrix
- Fluid Type** T = Twisted Nematic (TN)
S = Super Twisted Nematic (STN)
R = Reflective
F = Transflective
- Polarizer Mode** Default = Positive Image (No Letter), or if more Description Follows Use "+", N = Negative Image
- Display Mode** Default = 6 o'clock (No Number)
- Viewing Direction** 1 = 12 o'clock

Format	No. of Digits	Digit Size (mm)	Type (mm)	No. of Pins	Dual Row Spacing (mm)	Digi-Key Part No.	Price Each	Lumex Part No.
							1 5 10	
188	2 1/2	12.17	2.54 Dip	16	28.67	67-1787-ND ◆ 67-1798-ND ◆	1.29 1.20 1.08 1.29 1.20 1.08	LCD-S2X1C50TR LCD-S2X1C50TF
8.8.8	3	7.87	2.54 Dip	24	18.10	67-1788-ND ◆ 67-1799-ND ◆	1.21 1.12 1.00 1.21 1.12 1.00	LCD-S301C31TR LCD-S301C31TF
1888	3 1/2	12.70	2.54 Dip	40	33.00	67-1789-ND ◆	2.74 2.54 2.28	LCD-S3X1C50TR/A
1888	3 1/2	12.70	2.54 Dip	40	33.18	67-1790-ND ◆	2.74 2.54 2.28	LCD-S3X1C50TR/B
8.8.8.8	4	9.92	1.27 Dip	24	24.64	67-1792-ND ◆	2.15 1.99 1.79	LCD-S401C39TR
8.8.8.8	4	13.20	2.54 Dip	40	32.39	67-1793-ND ◆	3.05 2.83 2.54	LCD-S401C52TR
8.8.8.8	4	18.00	2.54 Dip	40.01		67-1794-ND ◆	3.30 3.05 2.74	LCD-S401C71TR
18888	4 1/2	8.89	2.54 Dip	40	24.45	67-1795-ND ◆	2.21 2.05 1.84	LCD-S4X1C35TR
8.8.8.8.8.8	6	17.99	2.54 Dip	50	40.14	67-1796-ND ◆ 67-1807-ND ◆	5.27 4.88 4.38 5.27 4.88 4.38	LCD-S601C71TR LCD-S601C71TF

Overall Size (mm)	Active Area (mm)	Color	Typical Voltage	Current (mA)	Works with LCD Part No.	Digi-Key Part No.	Price Each	Lumex Part No.
							1 5 10	
30.0 x 20.0	24.0 x 18.4	Green	2.2	25	67-1798-ND	67-1952-ND	1.82 1.68 1.51	SSB-CEL2417SUGC
114.0 x 28.8	100.4 x 25.2	Green	4.2	576	67-1807-ND	67-1953-ND ◆	6.27 5.81 5.21	SSB-C0810025GW

◆ RoHS Compliant



- Type of Display** Liquid Crystal Module
- Operating Temperature** S = Standard (0°C - 50°C)
H = High Temp (-20°C - 70°C)
- Model Number** Dot Matrix and Graphic Model
01602 = 16 Character x 2 Lines
12864 = 128 Columns x 64 Rows
D = Dot Matrix G = Graphic
- Display Type**
- Fluid Type** T = Twisted Nematic (TN)
S = Super Twisted Nematic (STN)
- Polarizer Mode** R = Reflective F = Transflective
- Display Mode** Default = Positive Image (No Letter), or if more description follows use "+", N = Negative Image
- Viewing Direction** 1 = 12 o'clock

LCD Graphic Modules



Built-in Controller	Dot Pixels W x H	Outline Dimension W x H x D (mm)	Viewing Area W x H (mm)	Pixel Size (mm) W x H	Pixel Pitch (mm) W x H	Backlight Type	Digi-Key Part No.	Price Each	Lumex Part No.
								1 5 10	
EPSON SED1520	122 x 32	84 x 44 x 12.70	60.50 x 18.50	.40 x .45	.44 x .49	LED	67-1782-ND	18.14 16.78 15.06	LCM-S12232GSF
SAMSUNG S6B0108	128 x 64	93 x 70 x 12.7	72 x 40	.48 x .48	.52 x .52	LED	67-1783-ND	34.70 32.10 28.81	LCM-S12864GSF
	128 x 64	75 x 52 x 10	60 x 32.5	.40 x .40	.43 x .43	LED	67-1784-ND	36.88 34.12 30.62	LCM-H12864GSF/H-Y
	240 x 64	180 x 65 x 14	133 x 40	.49 x .49	.53 x .53	LED	67-1785-ND	66.65 61.65 55.32	LCM-S24064GSF
TOSHIBA T6963C	240 x 128	144 x 104 x 15.1	114 x 64	.40 x .40	.45 x .45	LED	67-1786-ND	85.44 79.03 70.92	LCM-S240128GSF

- Features:**
- Standard Temperature Version

Dot Matrix LCD Modules



- Features:** • Standard Temperature Version • Standard Pin Connections • All the LCD's listed use a SAMSUNG controller P/N S6A0069

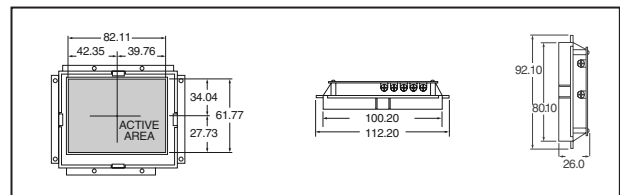
Display Format	Character Format	Pad Layout	Outline Dimension W x H x D (mm)	Viewing Area W x H (mm)	Character Size W x H (mm)	Dot Size W x H (mm)	Operating Temperature (°C)	Storage Temperature (°C)	Supply Voltage (V)	Digi-Key Part No.	Price Each	Lumex Part No.				
											1 5 10					
Twisted Nematic, Reflective without LED Backlight																
16 x 1	5 x 8 Dots	Top	80 x 36 x 8.8	66 x 16	3.07 x 6.56	.55 x .75	0°C - 50°C	-20°C - 70°C	5.0	67-1778-ND	5.45	5.04	4.52	LCM-S01601DTR		
16 x 2		80 x 36 x 8.8	66 x 16	2.96 x 5.56	.56 x .66	67-1779-ND				6.74	6.24	5.60	LCM-S01602DTR/A			
16 x 2		L Side	85 x 30 x 8.9	66 x 16	2.96 x 5.56	.56 x .66				67-1780-ND	6.74	6.24	5.60	LCM-S01602DTR/C		
16 x 2		Bottom	66 x 26 x 6.5	52 x 19	2.46 x 5.56	.46 x .66				67-1781-ND	4.27	3.95	3.55	LCM-S01602DTR/M		
Super Twisted Nematic, Reflective without LED Backlight																
16 x 1	5 x 8 Dots	Top	80 x 36 x 8.8	66 x 16	3.07 x 6.56	.55 x .75	0°C - 50°C	-20°C - 70°C	5.0	67-1767-ND	6.94	6.42	5.77	LCM-S01601DSR		
16 x 2		Top	80 x 36 x 8.8	66 x 16	2.96 x 5.56	.56 x .66				67-1768-ND	7.51	6.95	6.24	LCM-S01602DSR/A		
16 x 2		Bottom	84 x 44 x 8.8	66 x 16	2.96 x 5.56	.56 x .66				67-1769-ND	8.26	7.65	6.86	LCM-S01602DSR/B		
16 x 2		L Side	85 x 30 x 8.9	66 x 16	2.96 x 5.56	.56 x .66				67-1770-ND	7.51	6.95	6.24	LCM-S01602DSR/C		
16 x 2		Bottom	122 x 44 x 8.8	99 x 24	4.84 x 9.63	.92 x 1.16				67-1771-ND	11.25	10.41	9.34	LCM-S01602DSR/D		
16 x 4		Top	87 x 60 x 8.9	65 x 25.6	2.95 x 4.75	.55 x .55				67-1772-ND	15.99	14.79	13.27	LCM-S01604DSR		
20 x 2		L Side	116 x 37 x 8.9	85 x 18.6	3.2 x 5.55	.60 x .65				67-1773-ND	11.49	10.63	9.54	LCM-S02002DSR		
20 x 4		Top	98 x 60 x 8.8	77 x 26.3	2.95 x 4.75	.55 x .55				67-1774-ND	17.41	16.11	14.45	LCM-S02004DSR		
24 x 2		L Side	118 x 36 x 8.8	93.5 x 16	3.2 x 5.55	.60 x .65				67-1775-ND	11.95	11.06	9.92	LCM-S02402DSR		
40 x 4		L Side	190 x 54 x 10	149 x 29.5	2.78 x 4.89	.50 x .55				67-1777-ND	41.59	38.47	34.52	LCM-S04004DSR		
Super Twisted Nematic, Transflective with LED Backlight																
16 x 1		5 x 8 Dots	Top	80 x 36 x 12.7	66 x 16	3.07 x 6.56				.55 x .75	0°C - 50°C	-20°C - 70°C	5.0	67-1757-ND	9.16	8.48
16 x 2	Top		80 x 36 x 12.7	66 x 16	2.96 x 5.56	.56 x .66	67-1758-ND	9.70	8.98	8.06				LCM-S01602DSF/A		
16 x 2	Bottom		84 x 44 x 12.7	66 x 16	2.96 x 5.56	.56 x .66	67-1759-ND	10.15	9.39	8.43				LCM-S01602DSF/B		
16 x 2	L Side		85 x 30 x 12.7	66 x 16	2.96 x 5.56	.56 x .66	67-1760-ND	9.70	8.98	8.06				LCM-S01602DSF/C		
16 x 4	Top		87 x 60 x 12.7	62 x 25.6	2.95 x 4.75	.55 x .55	67-1761-ND	20.08	18.58	16.67				LCM-S01604DSF		
20 x 2	L Side		116 x 37 x 12.7	85 x 18.6	3.2 x 5.55	.60 x .65	67-1762-ND	14.94	13.82	12.41				LCM-S02002DSF		
20 x 4	Top		98 x 60 x 12.7	77 x 26.3	2.95 x 4.75	.55 x .55	67-1763-ND	22.87	21.16	18.99				LCM-S02004DSF		
24 x 2	L Side		118 x 36 x 12.7	93.5 x 16	3.2 x 5.55	.60 x .65	67-1764-ND	15.45	14.29	12.83				LCM-S02402DSF		
40 x 2	L Side		182 x 33.5 x 12.7	154 x 15.3	3.2 x 5.55	.60 x .65	67-1765-ND	26.96	24.95	22.38				LCM-S04002DSF		
40 x 4	L Side		190 x 54 x 14.5	149 x 29.5	2.78 x 4.89	.50 x .55	67-1766-ND	48.99	45.32	40.67				LCM-S04004DSF		

Color LCD TFT Module — 4.0" Modules

Take Standard NTSC Composite Video Signal

This high quality, low profile, 4.0" color LCD TFT module can be used to view any NTSC composite video source such as the output from a VCR or one of our small Panasonic CCD cameras.

- Operating Conditions:**
- Operating Voltage (Vop):** 10-30VDC, 12VDC typical
 - Operating Temperature (Top):** 0°C - 60°C
 - Storage Temperature (Tst):** -20°C - 80°C
 - Operating Humidity (Ho):** 85% RH
 - Storage Humidity (Hs):** 85% RH
 - Input Signal/NTSC Sync Negative** (Composite Video Signal: 1Vp-p/75Ω): Vi: 1Vp-p fH: 15.75kHz fV: 60Hz fc: 3.58MHz
 - Power Consumption (Pc):** 5W



Display Size (Inch)	Resolution (No. of Lines)		Active Area (mm)		Dot Pitch (mm)		Weight (gm.)	Backlight*	Viewing Angle				Digi-Key Part No.	Price Each	Lumex Part No.
	Width	Height	Width	Height	Width	Height			Right	Left	Up	Down			
4.0	480	234	82.10	61.70	0.106	0.161	166 ±5	CCFT	45°	45°	10°	30°	67-1547-ND	217.07	LCM-480234GF-40CG

* 10,000 hour minimum at Tamb=25°C

Free shipping on orders over £50! All prices are in British pound sterling and include duties.

uk.digikey.com — FREEPHONE: 0-800-587-0991 • 0-800-904-7786 — FREEFAX: 0-800-587-0992 • 0-800-904-7783

(UK091) 2293