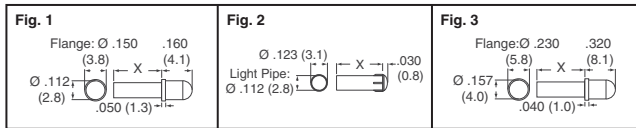




## Light Pipes

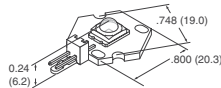


**FEATURES:**  
**PLP1 and PLP2 Series:** • Protects circuits from ESD • Use with BivarOpto SM or Through-hole Series LEDs • PLP1 Series panel light pipes press fits into panel  
**PLP5 Series:** • Dual-lens geometry • Improved lighting intensity • Press fits into panel

Fig.	Dimension X Inch (mm)	Digi-Key Part No.	Price Each	10	100	Bivar Opto Part No.
<b>PLP1 Series</b>						
1	.125 (3.2)	492-1148-ND	.73	.41	.30	PLP1-125
	.250 (6.4)	492-1149-ND	.73	.41	.30	PLP1-250
	.500 (12.7)	492-1150-ND	.73	.41	.30	PLP1-500
	.750 (19.0)	492-1151-ND	.77	.43	.31	PLP1-750
<b>PLP2 Series</b>						
2	.125 (3.2)	492-1152-ND	.73	.41	.30	PLP2-125
	.250 (6.4)	492-1153-ND	.73	.41	.30	PLP2-250
	.500 (12.7)	492-1154-ND	.73	.41	.30	PLP2-500
	.750 (19.0)	492-1155-ND	.73	.41	.30	PLP2-750
<b>PLP5 Series</b>						
3	.125 (3.2)	492-1141-ND	.73	.41	.30	PLP5-125
	.250 (6.4)	492-1142-ND	.73	.41	.30	PLP5-250
	.500 (12.7)	492-1143-ND	.73	.41	.30	PLP5-500
	.750 (19.0)	492-1144-ND	.73	.41	.30	PLP5-750
	1.00 (25.4)	492-1145-ND	.73	.41	.30	PLP5-1000
	1.25 (31.8)	492-1146-ND	.73	.41	.30	PLP5-1250
1.50 (38.1)	492-1147-ND	.73	.41	.30	PLP5-1500	

## LED Modules

**FEATURES:**  
 • Lens Appearance: Water Clear  
 • Viewing Angle: 100°

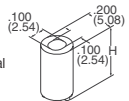


Dominant Wave Length λd (nm)	Color	Electro-Optical Data @ 350mA			Digi-Key Part No.	Price Each			Bivar Opto Part No.
		VI (V) Typ.	Lum Flux (lm) Min.	Max.		1	10	100	
465	Blue	3.3	6.3	23.5	492-1131-ND	14.30	12.03	10.99	LK-470-001
465	Blue	3.3	6.3	23.5	492-1136-ND†	14.30	12.03	10.99	LK-470-001-FC
520	Green	3.3	30.6	67.2	492-1132-ND	14.30	12.03	10.99	LK-530-001
520	Green	3.3	30.6	67.2	492-1137-ND†	14.30	12.03	10.99	LK-530-001-FC
585	Amber	2.3	30.6	67.2	492-1133-ND	9.90	8.33	7.61	LK-590-001
585	Amber	2.3	30.6	67.2	492-1138-ND†	9.90	8.33	7.61	LK-590-001-FC
620	Red	2.3	18.1	51.7	492-1134-ND	9.90	8.33	7.61	LK-630-001
620	Red	2.3	18.1	51.7	492-1139-ND†	9.90	8.33	7.61	LK-630-001-FC
4500K	White	3.3	23.5	67.2	492-1135-ND	14.30	12.03	10.99	LK-WHT-001
4500K	White	3.3	23.5	67.2	492-1140-ND†	14.30	12.03	10.99	LK-WHT-001-FC

† Field Connect

## Molded and Self-Retaining LED Mounts

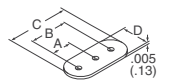
**Features:** • One universal style for both T-1 (3mm) and T-1 3/4 (5mm) LEDs • Internal tapered divider prevents leads from shorting  
**Material Specifications:** • UL Rated 94V-0, Color: Black, 33% GF Polyphalamide (PPA)



Dimension H Inch (mm)	Digi-Key Part No.	10	100	500	Bivar Opto Part No.
.15 (3.8)	492-1029-ND	1.65	11.03	40.79	LTM-150
.2 (5.1)	492-1030-ND	1.65	11.03	40.79	LTM-200
.25 (6.4)	492-1031-ND	2.13	14.20	52.55	LTM-250
.3 (7.6)	492-1032-ND	1.71	11.37	42.06	LTM-300
.35 (8.9)	492-1033-ND	1.71	11.37	42.06	LTM-350
.4 (10.2)	492-1034-ND	1.81	12.08	44.68	LTM-400
.45 (11.4)	492-1035-ND	1.81	12.08	44.68	LTM-450
.5 (12.7)	492-1036-ND	1.96	13.07	48.37	LTM-500



## Crystal Insulators

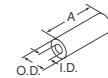


**Material Specifications:** Dupont, Mylar EL-21 with UL Rated 94V-2

Dimensions — Inch (mm)				Use With	Digi-Key Part No.	Pricing		Bivar Part No.
A	B	C	D			10	100	
—	.148 (3.8)	.325 (8.3)	.145 (3.7)	HC-80/U	492-1037-ND	.82	4.50	CI-148-028 SR
.074 (1.9)	.148 (3.8)	.325 (8.3)	.145 (3.7)	HC-80/U	492-1038-ND	.82	4.50	CI-148-028-3 SR
—	.192 (4.9)	.465 (11.8)	.219 (5.6)	HC-18/U, HC43/U, HC-49/U	492-1039-ND	.79	4.33	CI-192-028 SR
.096 (2.4)	.192 (4.9)	.465 (11.8)	.219 (5.6)	HC-18/U, HC43/U, HC-49/U	492-1040-ND	.82	4.50	CI-192-028-3 SR

## Nylon Spacers

**Material Specifications:**  
 Natural Nylon, per ASTM D 4066 PA 225, UL Rated 94V-2



Screw Size	Dimensions — Inch (mm)			Digi-Key Part No.	Pricing		Bivar Part No.
	Dim. A	ID	OD		10	100	
#2	1/16 (1.6)	.091 (2.3)	.187 (4.7)	492-1041-ND	.66	3.65	9913-062
	1/8 (3.2)	.091 (2.3)	.187 (4.7)	492-1042-ND	.66	3.65	9913-125
	3/16 (4.8)	.091 (2.3)	.187 (4.7)	492-1043-ND	.66	3.65	9913-187
	1/4 (6.4)	.091 (2.3)	.187 (4.7)	492-1044-ND	.66	3.65	9913-250
	5/16 (7.9)	.091 (2.3)	.187 (4.7)	492-1045-ND	.66	3.65	9913-312
	3/8 (9.5)	.091 (2.3)	.187 (4.7)	492-1046-ND	.72	3.94	9913-375
	7/16 (11.1)	.091 (2.3)	.187 (4.7)	492-1047-ND	.72	3.94	9913-437
	1/2 (12.7)	.091 (2.3)	.187 (4.7)	492-1048-ND	.72	3.94	9913-500
	9/16 (14.3)	.091 (2.3)	.187 (4.7)	492-1049-ND	.72	3.94	9913-562
	5/8 (15.9)	.091 (2.3)	.187 (4.7)	492-1050-ND	.77	4.25	9913-625
	3/4 (19.1)	.091 (2.3)	.187 (4.7)	492-1051-ND	.77	4.25	9913-750
	13/16 (20.6)	.091 (2.3)	.187 (4.7)	492-1052-ND	.82	4.50	9913-812
	7/8 (22.2)	.091 (2.3)	.187 (4.7)	492-1053-ND	.82	4.50	9913-875
	15/16 (23.8)	.091 (2.3)	.187 (4.7)	492-1054-ND	.82	4.50	9913-937
	1 (25.4)	.091 (2.3)	.187 (4.7)	492-1055-ND	.82	4.50	9913-1000
#2	1/16 (1.6)	.091 (2.3)	250 (6.4)	492-1056-ND	.66	3.65	9910-062
	1/8 (3.2)	.091 (2.3)	250 (6.4)	492-1057-ND	.66	3.65	9910-125
	3/16 (4.8)	.091 (2.3)	250 (6.4)	492-1058-ND	.66	3.65	9910-187
	1/4 (6.4)	.091 (2.3)	250 (6.4)	492-1059-ND	.66	3.65	9910-250
	5/16 (7.9)	.091 (2.3)	250 (6.4)	492-1060-ND	.66	3.65	9910-312
	3/8 (9.5)	.091 (2.3)	250 (6.4)	492-1061-ND	.72	3.94	9910-375
	7/16 (11.1)	.091 (2.3)	250 (6.4)	492-1062-ND	.72	3.94	9910-437
	1/2 (12.7)	.091 (2.3)	250 (6.4)	492-1063-ND	.72	3.94	9910-500
	9/16 (14.3)	.091 (2.3)	250 (6.4)	492-1064-ND	.72	3.94	9910-562
	5/8 (15.9)	.091 (2.3)	250 (6.4)	492-1065-ND	.77	4.25	9910-625
	3/4 (19.1)	.091 (2.3)	250 (6.4)	492-1066-ND	.77	4.25	9910-750
	13/16 (20.6)	.091 (2.3)	250 (6.4)	492-1067-ND	.82	4.50	9910-812
	7/8 (22.2)	.091 (2.3)	250 (6.4)	492-1068-ND	.82	4.50	9910-875
	15/16 (23.8)	.091 (2.3)	250 (6.4)	492-1069-ND	.82	4.50	9910-937
	1 (25.4)	.091 (2.3)	250 (6.4)	492-1070-ND	.82	4.50	9910-1000
#4	1/16 (1.6)	.125 (3.2)	.187 (4.7)	492-1071-ND	.66	3.65	9908-062
	1/8 (3.2)	.125 (3.2)	.187 (4.7)	492-1072-ND	.66	3.65	9908-125
	3/16 (4.8)	.125 (3.2)	.187 (4.7)	492-1073-ND	.66	3.65	9908-187
	1/4 (6.4)	.125 (3.2)	.187 (4.7)	492-1074-ND	.66	3.65	9908-250
	5/16 (7.9)	.125 (3.2)	.187 (4.7)	492-1075-ND	.66	3.65	9908-312
	3/8 (9.5)	.125 (3.2)	.187 (4.7)	492-1076-ND	.72	3.94	9908-375
	7/16 (11.1)	.125 (3.2)	.187 (4.7)	492-1077-ND	.72	3.94	9908-437
	1/2 (12.7)	.125 (3.2)	.187 (4.7)	492-1078-ND	.72	3.94	9908-500
	9/16 (14.3)	.125 (3.2)	.187 (4.7)	492-1079-ND	.72	3.94	9908-562
	5/8 (15.9)	.125 (3.2)	.187 (4.7)	492-1080-ND	.77	4.25	9908-625
	3/4 (19.1)	.125 (3.2)	.187 (4.7)	492-1081-ND	.77	4.25	9908-750
	13/16 (20.6)	.125 (3.2)	.187 (4.7)	492-1082-ND	.82	4.50	9908-812
	7/8 (22.2)	.125 (3.2)	.187 (4.7)	492-1083-ND	.82	4.50	9908-875
	15/16 (23.8)	.125 (3.2)	.187 (4.7)	492-1084-ND	.82	4.50	9908-937
	1 (25.4)	.125 (3.2)	.187 (4.7)	492-1085-ND	.82	4.50	9908-1000
#4	1/16 (1.6)	.125 (3.2)	250 (6.4)	492-1086-ND	.66	3.65	9911-062
	1/8 (3.2)	.125 (3.2)	250 (6.4)	492-1087-ND	.66	3.65	9911-125
	3/16 (4.8)	.125 (3.2)	250 (6.4)	492-1088-ND	.66	3.65	9911-187
	1/4 (6.4)	.125 (3.2)	250 (6.4)	492-1089-ND	.66	3.65	9911-250
	5/16 (7.9)	.125 (3.2)	250 (6.4)	492-1090-ND	.66	3.65	9911-312
	3/8 (9.5)	.125 (3.2)	250 (6.4)	492-1091-ND	.72	3.94	9911-375
	7/16 (11.1)	.125 (3.2)	250 (6.4)	492-1092-ND	.72	3.94	9911-437
	1/2 (12.7)	.125 (3.2)	250 (6.4)	492-1093-ND	.72	3.94	9911-500
	9/16 (14.3)	.125 (3.2)	250 (6.4)	492-1094-ND	.72	3.94	9911-562
	5/8 (15.9)	.125 (3.2)	250 (6.4)	492-1095-ND	.77	4.25	9911-625
	3/4 (19.1)	.125 (3.2)	250 (6.4)	492-1096-ND	.77	4.25	9911-750
	13/16 (20.6)	.125 (3.2)	250 (6.4)	492-1097-ND	.82	4.50	9911-812
	7/8 (22.2)	.125 (3.2)	250 (6.4)	492-1098-ND	.82	4.50	9911-875
	15/16 (23.8)	.125 (3.2)	250 (6.4)	492-1099-ND	.82	4.50	9911-937
	1 (25.4)	.125 (3.2)	250 (6.4)	492-1100-ND	.82	4.50	9911-1000
#6	1/16 (1.6)	.147 (3.7)	250 (6.4)	492-1101-ND	.66	3.65	9905-062
	1/8 (3.2)	.147 (3.7)	250 (6.4)	492-1102-ND	.66	3.65	9905-125
	3/16 (4.8)	.147 (3.7)	250 (6.4)	492-1103-ND	.66	3.65	9905-187
	1/4 (6.4)	.147 (3.7)	250 (6.4)	492-1104-ND	.66	3.65	9905-250
	5/16 (7.9)	.147 (3.7)	250 (6.4)	492-1105-ND	.66	3.65	9905-312
	3/8 (9.5)	.147 (3.7)	250 (6.4)	492-1106-ND	.72	3.94	9905-375
	7/16 (11.1)	.147 (3.7)	250 (6.4)	492-1107-ND	.72	3.94	9905-437
	1/2 (12.7)	.147 (3.7)	250 (6.4)	492-1108-ND	.72	3.94	9905-500
	9/16 (14.3)	.147 (3.7)	250 (6.4)	492-1109-ND	.72	3.94	9905-562
	5/8 (15.9)	.147 (3.7)	250 (6.4)				