



Liquid Tight Grommet

Features:

- Provides dust and watertight seal
- Conforms to IP67 standards
- Provides light strain relief
- Fits a variety of cable sizes



Fig. 1

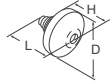


Fig. 2

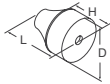
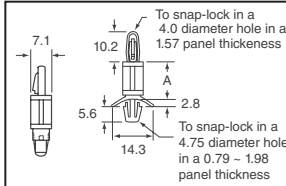


Fig.	Color	Material	Panel Hole (mm)	Panel Thick (mm)	Cable Size (mm)	Dimensions (mm)	Digi-Key Part No.	Price Each	Richco Part No.
						D L H		10 100	
1	Black	RMS-153	12.5	0.5-2.0	3.0-5.0	19.8 17.0 7.1	RP740-ND	.96 .80	LTG-199017
			16.0	1.0-4.0	5.0-7.0	21.0 18.9 6.2	RP741-ND	.62 .41	LTG-39897
			19.0	1.0-4.0	7.0-10.0	23.9 19.6 6.1	RP742-ND	.74 .49	LTG-34715
2	Gray	RMS-125	23.0	1.0-4.0	10.0-14.0	27.9 22.9 6.6	RP743-ND	.84 .56	LTG-34716
			29.0	1.0-4.0	14.0-20.0	35.8 24.4 6.6	RP744-ND	.99 .66	LTG-43021

Locking Circuit Board Supports

Features:

- Both ends lock by hand; no tools required
- Strong, dependable grip
- Material: Nylon 6/6
- Color: Natural

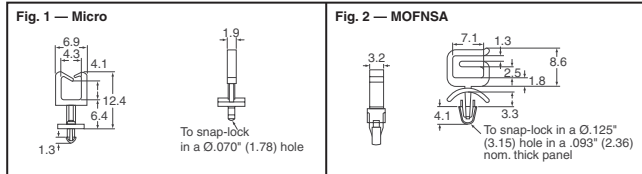


Dim. A (mm)	Digi-Key Part No.	Pricing				Richco Part No.
		10	100	500	1,000	
4.57	RP425-ND	2.39	19.92	79.66	119.49	LCBS-3
6.35	RP426-ND	2.54	21.19	84.76	127.14	LCBS-4
9.40	RP428-ND	2.67	22.25	89.00	133.50	LCBS-6
10.92	RP429-ND	2.78	23.15	92.58	138.87	LCBS-7
12.70	RP430-ND	2.87	23.93	95.72	143.58	LCBS-8
15.75	RP431-ND	3.07	25.60	102.38	153.57	LCBS-10
19.05	RP432-ND	3.27	27.29	109.16	163.74	LCBS-12
25.40	RP434-ND	3.68	30.69	122.74	184.11	LCBS-16

Wire Saddle

Features:

Wire Saddles are ideal for routing wires or optical fiber. Wires can be easily inserted into the top side of the saddle to protect them from abrasion. The **Micro** is ideal for low profile applications and takes up very little real estate. The **MOFNSA** is designed to snap into a .125" diameter hole in a .093" thick panel for applications that require a thicker board than the standard 1/16" board.

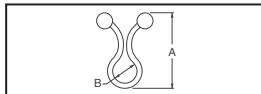


Hole Dia. Inch (mm)	Panel Thickness Inch (mm)	Digi-Key Part No.	Price Each	Richco Part No.
			10 100 500	
Fig. 1 — Standoff Micro Wire Saddle				
.070 (1.75)	.062 (1.57)	RP738-ND	.34 .29 .23	SMWS-1-01
.070 (1.75)	.093 (2.36)	RP739-ND	.34 .29 .23	SMWS-1-01
Fig. 2 — Mini Optical Fiber Network Saddle				
.125 (3.18)	.093 (2.36)	RP737-ND	.26 .22 .18	MOFNSA-2-01

Twist-Lok — TL Series

Features:

- Twist to secure wire bundles
- Material: Nylon 6/6, RMS-01
- Color: Natural

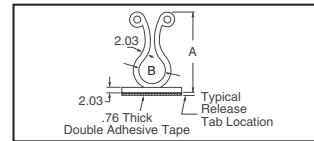


"A" Overall Height (mm)	"B" Wire Bundle Dia. (mm)	Digi-Key Part No.	25	Pricing	Richco Part No.
				100 1,000	
22.86	5.08 - 7.62	RP600-ND	2.88	9.88 59.29	TL-250
26.16	7.62 - 10.16	RP601-ND	3.08	10.57 63.43	TL-350
30.48	10.16 - 12.70	RP602-ND	3.32	11.39 68.36	TL-450
33.78	13.97 - 16.51	RP603-ND	3.47	11.89 71.35	TL-600
39.37	17.78 - 20.32	RP604-ND	4.03	13.82 82.94	TL-750
43.18	25.40 Maximum	RP605-ND	4.15	14.21 85.28	TL-950
55.63	30.23 Maximum	RP606-ND	5.61	19.25 115.49	TL-1125
68.07	36.58 Maximum	RP607-ND	6.68	22.91 137.45	TL-1375
74.42	39.62 Maximum	RP608-ND	8.29	28.43 170.60	TL-1500
87.63	45.97 Maximum	RP609-ND	8.80	30.16 180.94	TL-1750

Kurly-Lok On Base — KLB Series

Features:

- Adhesive backing, RMS-15
- Material: Nylon 6/6, RMS-01
- Color: Natural

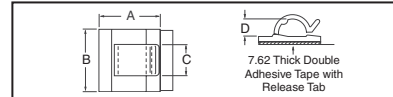


"A" Overall Height (mm)	"B" Wire Bundle Dia. (mm)	Digi-Key Part No.	25	Pricing	Richco Part No.
				100 1,000	
27.18	7.62 - 10.16	RP610-ND	13.02	44.63 267.80	KLB-350A-RT
31.24	10.16 - 12.70	RP611-ND	14.39	49.35 296.10	KLB-450A-RT
40.13	17.78 - 20.32	RP612-ND	15.13	51.86 311.18	KLB-750A-RT

Wire Cord Klip — WCK Series

Features:

- Adhesive backing for quick mounting
- Material: Nylon 6/6, RMS-01
- Color: Natural

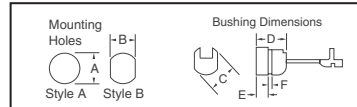


Hole Dia. (mm)	Dimensions (mm)				Digi-Key Part No.	Pricing			Richco Part No.
	A	B	C	D		25	100	1,000	
With Tape									
4.57	16.00	15.75	7.87	4.06	RP617-ND	14.40	49.37	296.21	WCK-180-01A-RT
11.43	25.15	25.15	11.94	7.11	RP618-ND	25.28	86.67	520.02	WCK-460-01A-RT
18.29	25.40	25.40	12.70	13.46	RP619-ND	31.43	107.77	646.60	WCK-720-01A-RT
Without Tape									
18.29	25.40	25.40	12.70	13.46	RP622-ND	24.97	85.62	513.72	WCK-720-01

Strain Relief Bushings — SRB-F and SRB-R Series

Features:

- Bushing eliminates strain and wear on wires and cords
- Withstands temperatures to 150°F (65°C)
- Material: Nylon 6/6, RMS-04
- Color: Black



Digi-Key Part No.	Approx. Wire Size (mm)	Mounting Holes (mm)		Bushing Dimensions (mm)			
		Style A	Style B	C	D	E	F*
RP461-ND	2.79 x 5.33	9.52	8.76	10.79	10.41	3.94	1.57
	2.29 x 4.57						
RP462-ND	4.09 x 7.62	11.81	14.48	12.70	4.34	2.54	
	3.81 x 7.11						
RP463-ND	4.06 x 9.40	14.27	13.46	15.49	15.24	6.10	3.30
	3.81 x 8.64						
	5.08 x 9.40						
	4.57 x 8.89						
RP464-ND	4.83 x 7.62	12.70	11.58	13.84	10.19	3.61	1.80
	3.81 x 7.11						
	4.06 x 7.62						
RP465-ND	6.35	11.81	14.22	10.92	4.19	2.54	
	6.73						
	7.37						
	6.86						
RP466-ND	8.25	14.48	18.45	17.27	6.98	3.18	
	7.62						
	9.02						
	8.38						

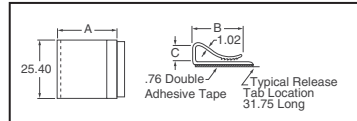
* Maximum Panel Thickness

Digi-Key Part No.	Pricing			Richco Part No.
	25	100	5,000	
RP461-ND	10.54	36.12	216.72	SRB-F-2
RP462-ND	4.00	13.73	82.37	SRB-F-4
RP463-ND	13.35	45.78	274.68	SRB-F-5
RP464-ND	3.26	11.18	67.10	SRB-F-7
RP465-ND	3.64	12.49	74.92	SRB-R-5
RP466-ND	8.09	27.73	166.36	SRB-R-6
RPSRPL-ND	SRB Pincher Tool..... \$99.25/1			SRPL-2

C-Type Flat Cable Clamps — CFCC Series

Features:

- Designed for routing flat ribbon cable
- Serrated grip to prevent slippage
- Adhesive backing for quick mount in any direction
- Material: Noryl-White, RMS-05; PVC-Gray, RMS-04



Material	Dimensions (mm)			Digi-Key Part No.	Pricing			Richco Part No.
	A	B	C		25	100	1,000	
Noryl-White	14.27	12.45	4.57	RP391-ND	12.86	44.09	264.56	CFCC-3-05A-RT
	14.27	10.16	6.35	RP392-ND	16.32	55.96	335.74	CFCC-4-05A-RT
	26.97	22.35	6.35	RP393-ND	20.37	69.83	418.97	CFCC-8-05A-RT
Rigid PVC-Gray	26.97	22.35	6.35	RP394-ND	15.71	53.86	323.17	CFCC-8-04A-RT

More Product Available Online: www.digkey.com