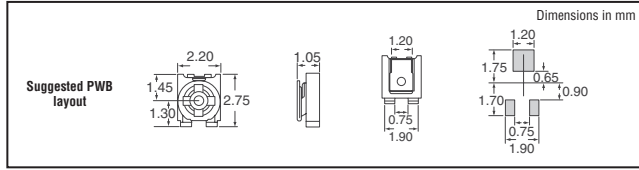


BOURNS Trimmer Potentiometers

SERIES 3302 — 2mm SMD, Trimming Potentiometer

3302W, X

3 Terminals for Automatic Trimming Adjustment Low Profile



Feature: • Single-Turn Cermet / Open Frame
Characteristics: • Resistance Tolerance: ±25% standard
 • Contact Resistance Variation: 5% maximum
 • Resolution: Infinite • Adjustment Angle: 260° ±20°
 • Power Rating (50VDC maximum): 70°C = 0.15W • Temperature Range: -40°C ~ 85°C • Temperature Coefficient: ±250ppm/°C • TRS maximum: ±5%

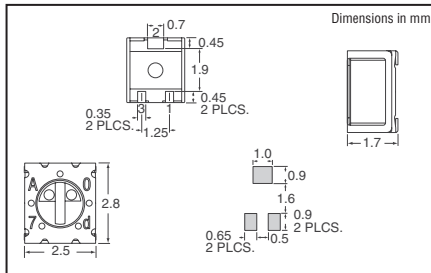
Res. (Ω)	Digi-Key Part No.	Digi-Key Part No.
2K	3302W-202E□□-ND	—
5K	3302W-502E□□-ND	3302X-502E□□-ND
10K	3302W-103E□□-ND	3302X-103E□□-ND
20K	3302W-203E□□-ND	3302X-203E□□-ND

Series	Part No.	Cut Tape Pricing			Part No.	Tape and Reel Pricing	
		1	10	100		3,000	
3302W	Add "CT-ND"	.45	3.75	34.50	Add "TR-ND"	225.00/M	
3302X	Add "CT-ND"	.45	3.75	34.50	Add "TR-ND"	225.00/M	

◆ RoHS Compliant

NEW! SERIES 3312J — 2mm Square SMD Trimming Potentiometer

Features: • Single-Turn / Sealed • **Characteristics:** • Resistance Tolerance: ±20% • Resolution: Infinite • Operating Temperature Range: -55°C ~ 125°C • Temperature Coefficient: ±100ppm/°C • Mechanical Stop: 285° nominal

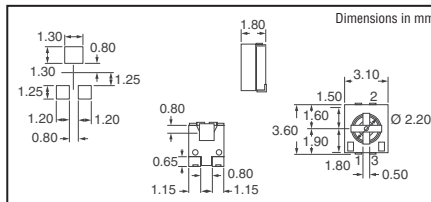


Res. (Ω)	Digi-Key Part No.	Digi-Key Part No.
10	3312J-1-100E□□-ND	—
20	3312J-1-200E□□-ND	—
50	3312J-1-500E□□-ND	—
100	3312J-1-101E□□-ND	—
200	3312J-1-201E□□-ND	—
500	3312J-1-501E□□-ND	—
1K	3312J-1-102E□□-ND	—
2K	3312J-1-202E□□-ND	—
5K	3312J-1-502E□□-ND	—
10K	3312J-1-103E□□-ND	—
20K	3312J-1-203E□□-ND	—
50K	3312J-1-503E□□-ND	—
100K	3312J-1-104E□□-ND	—
200K	3312J-1-204E□□-ND	—
500K	3312J-1-504E□□-ND	—
1M	3312J-1-105E□□-ND	—

Series	Part No.	Cut Tape Pricing			Part No.	Tape and Reel Pricing	
		1	10	100		500	
3312J	Add "CT-ND"	2.52	21.60	187.20	Add "TR-ND"	587.00	

SERIES TC73 — Surface Mount 3mm Single-Turn Top Adjust Carbon

Characteristics:
 • Resistance Tolerance: ±30% • Adjustment Angle: 260° • Power Rating: .05W
 • Temperature Range: -25°C ~ 85°C • Temperature Coefficient: ±250 ppm/°C
 • Rotational Life: 20 turns • Rotational Torque: 10-150g-cm maximum



Res. (Ω)	Digi-Key Part No.	Digi-Key Part No.
500	TC73X-501E□□-ND	—
1K	TC73X-102E□□-ND	—
2K	TC73X-202E□□-ND	—
5K	TC73X-502E□□-ND	—
10K	TC73X-103E□□-ND	—
20K	TC73X-203E□□-ND	—

Series	Part No.	Cut Tape Pricing			Part No.	Tape and Reel Pricing	
		1	10	100		2,000	
TC73X	Add "CT-ND"	.20	1.65	14.40	Add "TR-ND"	100.00/M	

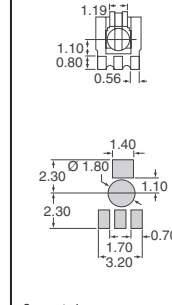
◆ RoHS Compliant

SERIES 3303 — 3mm SMD, Trimming Potentiometer

Characteristics:

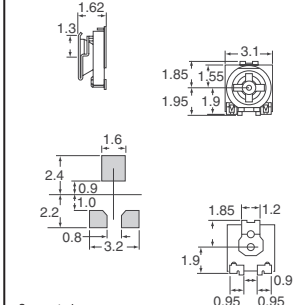
- Resistance Tolerance: ±25% standard
- Contact Resistance Variation: 5% maximum
- Resolution: Infinite • Adjustment Angle: 260° ±20°
- Power Rating (50VDC maximum): 70°C = 0.15W
- Temperature Range: -40°C ~ 125°C
- Temperature Coefficient: ±250ppm/°C
- TRS maximum: ±5%

3303C — 3-Terminal Both Sides Adjust



Suggested PWB layout

3303W, X — Open Frame for Reflow Soldering 3-Terminal Low Profile



Suggested PWB layout

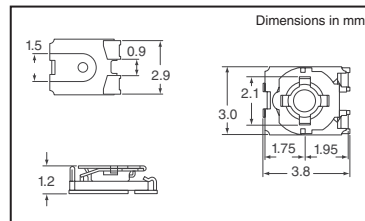
Res. (Ω)	Digi-Key Part No.	Digi-Key Part No.	Digi-Key Part No.
500	—	—	3303X-501E□□-ND
5K	—	3303W-502E□□-ND	—
10K	—	3303W-103E□□-ND	—
20K	—	3303W-203E□□-ND	—
50K	3303C-503E□□-ND	—	—
100K	—	3303W-104E□□-ND	3303X-104E□□-ND
200K	—	3303W-204E□□-ND	—
1M	3303C-105E□□-ND	—	—

Series	Part No.	Cut Tape Pricing			Part No.	Tape and Reel Pricing	
		1	10	100		2,000	
3303C	Add "CT"-ND	.45	3.75	34.50	Add "TR"-ND	225.00/M	
3303W	Add "CT"-ND	.26	2.13	19.55	Add "TR"-ND	127.50/M	
3303X	Add "CT"-ND	.26	2.13	19.55	Add "TR"-ND	127.50/M	

◆ RoHS Compliant

SERIES TC33X — 3mm SMD Trimming Potentiometer

Characteristics:
 • Resistance Tolerance: ±25% standard • Contact Resistance Variation: 5% maximum • Resolution: Essentially Infinite • Adjustment Angle: 260° ±20° • Power Rating (50VDC maximum): 70°C = 0.1W • Temperature Range: -40°C ~ 120°C • Temperature Coefficient: ±250ppm/°C



Res. (Ω)	Digi-Key Part No.	Digi-Key Part No.
100	TC33X-101E□□-ND	—
1K	TC33X-102E□□-ND	—
2K	TC33X-202E□□-ND	—
5K	TC33X-502E□□-ND	—
10K	TC33X-103E□□-ND	—
50K	TC33X-503E□□-ND	—
100K	TC33X-104E□□-ND	—

Series	Part No.	Cut Tape Pricing			Part No.	Tape and Reel Pricing	
		1	10	100		2,500	
TC33X	Add "CT"-ND	.20	1.65	14.40	Add "TR"-ND	90.00/M	

◆ RoHS Compliant

Digi-Reel® Most SMT cutdown parts are available on a Digi-Reel®. For Digi-Reel part number, change 1-ND to 6-ND or CT-ND to DKR-ND. See Digi-Key® Services on page 2 for additional information.

More Product Available Online: www.digkey.com

Toll-Free: 1-800-344-4539 • Phone 218-681-6674 • Fax: 218-681-3380

(T091) 1927

