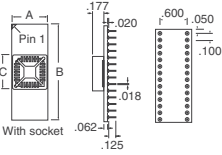




## Surface Mount PLCC to DIP Adapters

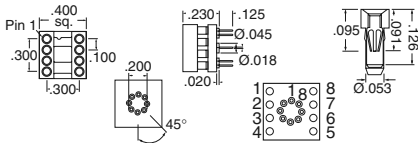
**Materials:** • Pins and Contacts: Phosphor bronze adapter • Body: FR-4, .062" (1.57mm) thick • Socket: LCP, UL94V-0 rated • Pads and Traces: 1 oz. minimum copper. **Plating:** • Pins: 200µ" tin per MIL-T-10727 over 100µ" nickel per QQ-N-290 • Contacts: 150µ" 90/10 tin/lead



No. of Pins	Dimensions - Inch			Digi-Key Part No.	Price Each		Aries Part No.
	A	B	C		1	25	
28	.77	1.40	.705	A326-ND	23.85	20.45	28-653000-10
32	.705	1.60	.805	A721-ND	38.40	32.26	32-653000-10
44	.97	2.20	.910	A327-ND	27.48	23.55	44-653000-10
68	1.28	3.40	1.220	A328-ND	31.80	27.26	68-653000-10
84	1.48	4.20	1.420	A329-ND	31.80	27.26	84-653000-10

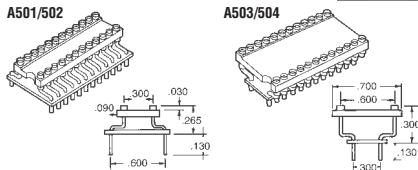
## TO to DIP Adapter/Socket

**Features:** 8-pin DIP IC socket on the top and a circular 8-pin TO can male pin footprint on the bottom, can be readily mounted on boards having TO thru-hole footprints without having to redesign the board. **Specifications:** • Socket Body: Black UL94V-0 glass-filled polyester thermoplastic • Female Pin Body Plating: 200µ" minimum tin over 100µ" minimum nickel • Contact Plating: 10µ" minimum gold over 50µ" minimum nickel • Male Pin: Brass alloy 360 • Male Pin Plating: 200µ" minimum tin • Current rating: 3 Amps • Operating Temperature: 221°F (105°C) Tin plating • Accepts leads .015"-.025" (.38mm-.64mm) in diameter, .100"-.125" (2.54mm-3.18mm) long **Mounting Considerations:** Suggested PCB hole size: .028" (.71mm) diameter



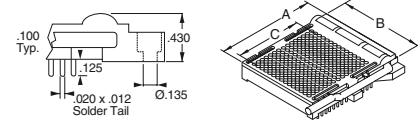
Digi-Key Part No.	1	Price Each			Aries Part No.
		25	100	500	
A330-ND	6.06	5.19	4.73	4.33	1109523

## Adapter Sockets



No. of Pins	Description	Inch	Digi-Key Part No.	Price Each			Aries Part No.
				1	25	100	
24	.300 ~ .600	A501-ND	7.30	5.55	3.65	1106396-24	
28	.300 ~ .600	A502-ND	7.98	6.07	3.99	1106396-28	
24	.600 ~ .300	A503-ND	7.30	5.55	3.65	1107254-24	
28	.600 ~ .300	A504-ND	7.98	6.07	3.99	1107254-28	

## PGA Zero Insertion Force (ZIF) Sockets



**Features:** • The Aries ZIF PGA is an extremely rugged, yet smooth acting test socket. • A strong metal cam activates the contacts which are normally closed. This prevents dependency on the plastic for contact force. • Housing of glass filled PPS, UL94V-0 rated **Specifications:** • Contacts: Beryllium copper • Temperature Rating: -65°C ~ 125°C • Housing: Glass filled PPS, UL94V-0 rated • Handle: Stainless steel

Grid Size	No. of Pins	Dimensions - Inch			Digi-Key Part No.	Price Each
		A	B	C		
13 x 13	169	1.894	1.675	1.200	A314-ND	29.45
15 x 15	225	2.094	1.875	1.400	A315-ND	36.69
17 x 17	289	2.294	2.075	1.600	A316-ND	44.75
19 x 19	361	2.494	2.275	1.800	A317-ND	53.83
21 x 21	441	2.694	2.475	2.000	A318-ND	63.98

◆ RoHS Compliant

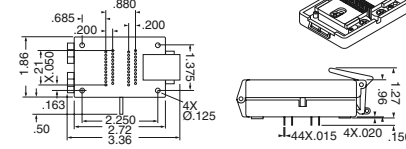
## Surface Mount Universal SOIC Zero Insertion Force (ZIF) Test Sockets

**Socket Accepts:** SOIC gull wing & J-lead devices up to 44 pin devices; .050" (1.27mm) lead pitch; body widths from .15" (3.81mm) to .60" (15.24mm)

**Materials:**

• Body: Glass-filled PPS, UL94V-0 rated  
• Contacts: Beryllium copper alloy per QQ-C-543  
• Hardware: Stainless Steel

**Plating:** 20µ" minimum gold per MIL-G-45204 over 100µ" minimum nickel per QQ-N-290 over 20µ" minimum copper per MIL-C-14550



Digi-Key Part No.	Price Each	Aries Part No.

**44 Pos. DIP Adapter (Converts A339-ND to standard 44 Pos. DIP)**

Digi-Key Part No.	Price Each	Aries Part No.
A728-ND	61.45	44-647-10

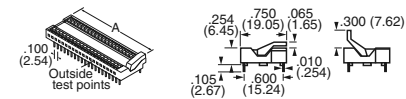
◆ RoHS Compliant

## Zero Insertion Force (ZIF) Lo-Profile Sockets

**Features:** A complete line of sizes, 24, 28 and 40 pin, low profile ZIF (zero insertion force) sockets provides a low cost solution for a test socket with a height of only .319" (8.10mm) [8, 10] and even with handle in open position, measures just .554" (14.07mm).

**Specifications:**

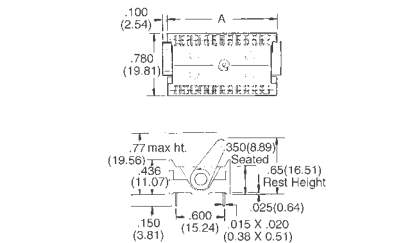
• Pin: Spring temper beryllium copper, tin plated • Body: Glass filled polyester, UL94V-0 rated. • Cam: Cast metal



No. of Pins	Dimension A Inch (mm)	Digi-Key Part No.	Price Each			Aries Part No.
			1	25	100	
24	1.450 (36.83)	A346-ND	8.66	7.88	6.70	24-526-10
28	1.650 (41.91)	A347-ND	8.17	7.43	6.32	28-526-10
40	2.250 (57.15)	A348-ND	9.82	8.93	7.59	40-526-10

## Zero Insertion Force (ZIF) Sockets

**Specifications:** • Contacts: Heat treated beryllium copper • Plating: 100µ" tin plating per MIL-T-10727 • Sockets: Glass filled thermoplastic



No. of Pins	Dimension A Inch (mm)	Digi-Key Part No.	Price Each			Aries Part No.
			1	25	100	
24	1.30 (33.02)	A150-ND	10.65	9.59	9.06	24-516-10
28	1.62 (41.15)	A146-ND	11.45	10.31	9.74	28-516-10
40	2.10 (53.34)	A152-ND	15.10	13.59	12.85	40-516-10

◆ RoHS Compliant

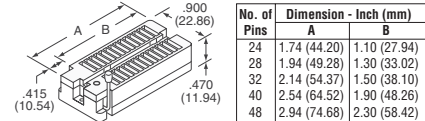
## Universal Zero Insertion Force (ZIF) Test Sockets



The Aries Universal Test Socket is a direct replacement for other test sockets currently on the market, with a number of significant advantages.

**Features:**

• .900 (22.86) overall height with contact level up • Available 24, 28, 32, 40, 48 pins in body of UL94V-0 rated polyphenylene sulfide  
• Contacts available tin plated (for up to 105°C) or gold plated (for up to 150°C) • Insulation Resistance - 1000MΩ minimum Dielectric withstanding voltage - 1000 VAC minimum • Contact rating - 1 amp • All pin count sockets (24, 28, 32, 40, 48) go into PCBs with .600 (15.24) centers. • Sockets can be soldered into PC boards or plugged into any socket. • Contacts are normally closed to eliminate dependence on plastic to sustain contact.



No. of Pins	Contact Plating	Digi-Key Part No.	Price Each			Aries Part No.
			1	25	100	
24	Tin	A300-ND	7.90	6.92	6.72	24-6554-10
24	Gold	A301AE-ND	11.42	10.00	9.72	24-6554-11
28	Tin	A302-ND	9.02	7.90	7.68	28-6554-10
28	Gold	A303-ND	12.38	10.84	10.53	28-6554-11
32	Tin	A304-ND	10.06	8.81	8.56	32-6554-10
32	Gold	A305-ND	13.74	12.03	11.69	32-6554-11
40	Tin	A306-ND	12.02	10.52	10.23	40-6554-10
40	Gold	A307-ND	16.38	14.34	13.93	40-6554-11
48	Tin	A308-ND	14.10	12.34	11.99	48-6554-10
48	Gold	A309-ND	19.16	16.77	16.30	48-6554-11

## Quick-Release Universal ZIF Test Socket



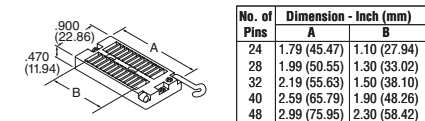
**Features:**

• Aries' Universal Test Socket accepts devices on .300" (7.62mm) to .600" (15.24mm) centers • Sockets go into PCB .600" (15.24mm) centers • Swing quick-release handle down to open contacts and insert device. Release and handle automatically returns as contacts close onto device leads.

**Specifications:**

• Socket Body: Black UL94V-0 Glass-filled Polyphenylene Sulfide (PPS)  
• Handle: stainless steel  
• Contact Current Rating: 1 amp  
• Insulation Resistance: 1000MΩ minimum  
• Life Cycle: 25,000 - 50,000 cycles  
• Operating Temperature: 221°F (105°C) Tin plating; 302°F (150°C) Gold plating

• Retention Force (when closed): 55 grams/pin based on a .020" (.51mm) diameter test lead • Accepts leads .015"-.035" (.38mm-.89mm) wide, .100"-.280" (2.79mm-7.11mm) long



No. of Pins	Description	Digi-Key Part No.	Price Each			Aries Part No.
			1	25	100	
24	Tin Plated	A439-ND	11.93	10.02	8.12	24-6574-10
24	Gold Plated	A440-ND	13.80	11.60	9.39	24-6574-11
28	Tin Plated	A441-ND	13.60	11.43	9.26	28-6574-10
28	Gold Plated	A442-ND	18.70	15.71	12.73	28-6574-11
32	Tin Plated	A443-ND	15.33	12.88	10.43	32-6574-10
32	Gold Plated	A444-ND	20.90	17.56	14.22	32-6574-11
40	Tin Plated	A445-ND	18.13	15.23	12.33	40-6574-10
40	Gold Plated	A446-ND	24.73	20.77	16.82	40-6574-11
48	Tin Plated	A447-ND	21.28	17.88	14.48	48-6574-10
48	Gold Plated	A448-ND	28.93	24.30	19.68	48-6574-11

More Product Available Online: [www.digixkey.com](http://www.digixkey.com)

Toll-Free: 1-800-344-4539 • Phone 218-681-6674 • Fax: 218-681-3380