



Liquid Tight Grommet

Features:

- Provides dust and watertight seal
- Conforms to IP67 standards
- Provides light strain relief
- Fits a variety of cable sizes



Fig. 1

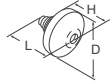


Fig. 2

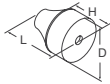
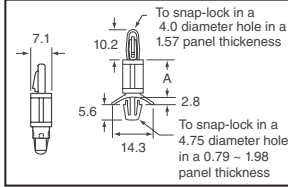


Fig.	Color	Material	Panel Hole (mm)	Panel Thick (mm)	Cable Size (mm)	Dimensions (mm)	Digi-Key Part No.	Price Each	Richco Part No.
						D L H		10 100	
1	Black	RMS-153	12.5	0.5-2.0	3.0-5.0	19.8 17.0 7.1	RP740-ND	1.16 .97	LTG-199017
			16.0	1.0-4.0	5.0-7.0	21.0 18.9 6.2	RP741-ND	2.14 1.43	LTG-39897
			19.0	1.0-4.0	7.0-10.0	23.9 19.6 6.1	RP742-ND	.71 .47	LTG-34715
2	Gray	RMS-125	23.0	1.0-4.0	10.0-14.0	27.9 22.9 6.6	RP743-ND	3.01 2.01	LTG-34716
			29.0	1.0-4.0	14.0-20.0	35.8 24.4 6.6	RP744-ND	3.55 2.37	LTG-43021

Locking Circuit Board Supports

Features:

- Both ends lock by hand; no tools required
- Strong, dependable grip
- Material: Nylon 6/6
- Color: Natural

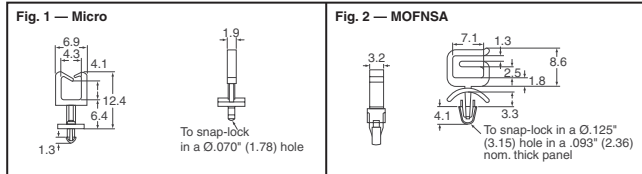


Dim. A (mm)	Digi-Key Part No.	Pricing				Richco Part No.
		10	100	500	1,000	
4.57	RP425-ND	2.19	18.24	72.96	109.44	LCBS-3
6.35	RP426-ND	2.33	19.41	77.62	116.43	LCBS-4
9.40	RP428-ND	2.45	20.38	81.50	122.25	LCBS-6
10.92	RP429-ND	2.54	21.20	84.78	127.17	LCBS-7
12.70	RP430-ND	2.63	21.92	87.66	131.49	LCBS-8
15.75	RP431-ND	2.81	23.44	93.76	140.64	LCBS-10
19.05	RP432-ND	3.00	24.99	99.96	149.94	LCBS-12
25.40	RP434-ND	3.37	28.10	112.40	168.60	LCBS-16

Wire Saddle

Features:

Wire Saddles are ideal for routing wires or optical fiber. Wires can be easily inserted into the top side of the saddle to protect them from abrasion. The **Micro** is ideal for low profile applications and takes up very little real estate. The **MOFNSA** is designed to snap into a .125" diameter hole in a .093" thick panel for applications that require a thicker board than the standard 1/16" board.

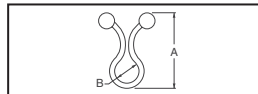


Hole Dia. Inch (mm)	Panel Thickness Inch (mm)	Digi-Key Part No.	Price Each	Richco Part No.
			10 100 500	
Fig. 1 — Standoff Micro Wire Saddle				
.070 (1.75)	.062 (1.57)	RP738-ND	.32 .27 .21	SMWS-1-01
.070 (1.75)	.093 (2.36)	RP739-ND	.32 .27 .21	SMWS-1-01
Fig. 2 — Mini Optical Fiber Network Saddle				
.125 (3.18)	.093 (2.36)	RP737-ND	.25 .21 .17	MOFNSA-2-01

Twist-Lok — TL Series

Features:

- Twist to secure wire bundles
- Material: Nylon 6/6, RMS-01
- Color: Natural

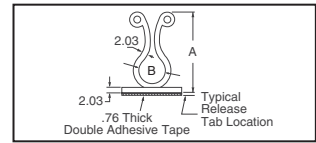


"A" Overall Height (mm)	"B" Wire Bundle Dia. (mm)	Digi-Key Part No.	25	Pricing	Richco Part No.
				100 1,000	
22.86	5.08 ~ 7.62	RP600-ND	2.67	9.14 54.83	TL-250
26.16	7.62 ~ 10.16	RP601-ND	2.85	9.77 58.64	TL-350
30.48	10.16 ~ 12.70	RP602-ND	3.07	10.54 63.22	TL-450
33.78	13.97 ~ 16.51	RP603-ND	3.21	11.00 65.99	TL-600
39.37	17.78 ~ 20.32	RP604-ND	3.73	12.78 76.68	TL-750
43.18	25.40 Maximum	RP605-ND	3.83	13.14 78.84	TL-950
55.63	30.23 Maximum	RP606-ND	5.19	17.80 106.78	TL-1125
68.07	36.58 Maximum	RP607-ND	6.18	21.18 127.08	TL-1375
74.42	39.62 Maximum	RP608-ND	7.67	26.29 157.75	TL-1500
87.63	45.97 Maximum	RP609-ND	8.13	27.88 167.29	TL-1750

Kurly-Lok On Base — KLB Series

Features:

- Adhesive backing, RMS-15
- Material: Nylon 6/6, RMS-01
- Color: Natural

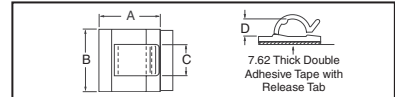


"A" Overall Height (mm)	"B" Wire Bundle Dia. (mm)	Digi-Key Part No.	25	Pricing	Richco Part No.
				100 1,000	
27.18	7.62 ~ 10.16	RP610-ND	12.04	41.27 247.61	KLB-350A-RT
31.24	10.16 ~ 12.70	RP611-ND	13.31	45.63 273.78	KLB-450A-RT
40.13	17.78 ~ 20.32	RP612-ND	13.99	47.95 287.71	KLB-750A-RT

Wire Cord Klip — WCK Series

Features:

- Adhesive backing for quick mounting
- Material: Nylon 6/6, RMS-01
- Color: Natural

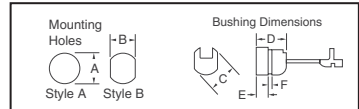


Hole Dia. (mm)	Dimensions (mm)				Digi-Key Part No.	Pricing			Richco Part No.
	A	B	C	D		25	100	1,000	
With Tape									
4.57	16.00	15.75	7.87	4.06	RP617-ND	13.31	45.65	273.89	WCK-180-01A-RT
11.43	25.15	25.15	11.94	7.11	RP618-ND	23.37	80.13	480.78	WCK-460-01A-RT
18.29	25.40	25.40	12.70	13.46	RP619-ND	29.06	99.64	597.82	WCK-720-01A-RT
Without Tape									
18.29	25.40	25.40	12.70	13.46	RP622-ND	24.01	82.33	493.96	WCK-720-01

Strain Relief Bushings — SRB-F and SRB-R Series

Features:

- Bushing eliminates strain and wear on wires and cords
- Withstands temperatures to 150°F (65°C)
- Material: Nylon 6/6, RMS-04
- Color: Black



Digi-Key Part No.	Approx. Wire Size (mm)	Mounting Holes (mm)		Bushing Dimensions (mm)			
		Style A	Style B	C	D	E	F*
RP461-ND	2.79 x 5.33	9.52	8.76	10.79	10.41	3.94	1.57
	2.29 x 4.57						
RP462-ND	4.09 x 7.62	11.81	14.48	12.70	4.34	2.54	
	3.81 x 7.11						
RP463-ND	4.06 x 9.40	14.27	13.46	15.49	15.24	6.10	3.30
	3.81 x 8.64						
	5.08 x 9.40						
	4.57 x 8.89						
RP464-ND	4.83 x 7.62	12.70	11.58	13.84	10.19	3.61	1.80
	3.81 x 7.11						
	4.06 x 7.62						
RP465-ND	6.35	11.81	14.22	10.92	4.19	2.54	
	6.73						
	7.37						
	6.86						
RP466-ND	8.25	14.48	18.45	17.27	6.98	3.18	
	7.62						
	9.02						
	8.38						

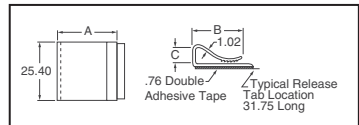
* Maximum Panel Thickness

Digi-Key Part No.	Pricing				Richco Part No.
	25	100	1,000	5,000	
RP461-ND	10.54	36.12	216.72	174.58/M	SRB-F-2
RP462-ND	4.00	13.73	82.37	66.36/M	SRB-F-4
RP463-ND	13.35	45.78	274.68	221.27/M	SRB-F-5
RP464-ND	3.26	11.18	67.10	54.06/M	SRB-F-7
RP465-ND	3.64	12.49	74.92	60.35/M	SRB-R-5
RP466-ND	8.09	27.73	166.36	134.01/M	SRB-R-6
RPSRPL-ND	SRB Pincher Tool			\$95.43/1	SRPL-2

C-Type Flat Cable Clamps — CFCC Series

Features:

- Designed for routing flat ribbon cable
- Serrated grip to prevent slippage
- Adhesive backing for quick mount in any direction
- Material: Noryl-White, RMS-05; PVC-Gray, RMS-04



Material	Dimensions (mm)			Digi-Key Part No.	Pricing			Richco Part No.
	A	B	C		25	100	1,000	
Noryl-White	14.27	12.45	4.57	RP391-ND	11.89	40.76	244.58	CFCC-3-05A-RT
	14.27	10.16	6.35	RP392-ND	15.09	51.73	310.39	CFCC-4-05A-RT
	26.97	22.35	6.35	RP393-ND	18.83	64.56	387.36	CFCC-8-05A-RT
Rigid PVC-Gray	26.97	22.35	6.35	RP394-ND	14.53	49.80	298.80	CFCC-8-04A-RT

More Product Available Online: www.digkey.com