



## Liquid Tight Grommet

### Features:

- Provides dust and watertight seal
- Conforms to IP67 standards
- Provides light strain relief
- Fits a variety of cable sizes



Fig. 1

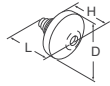
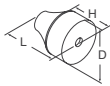


Fig. 2

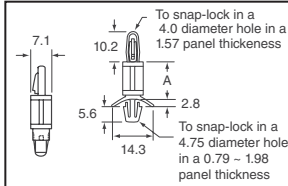


| Fig. | Color | Material | Panel Hole (mm) | Panel Thick (mm) | Cable Size (mm) | Dimensions (mm) | Digi-Key Part No. | Price Each | Richco Part No. |
|------|-------|----------|-----------------|------------------|-----------------|-----------------|-------------------|------------|-----------------|
|      |       |          |                 |                  |                 | D L H           |                   | 10 100     |                 |
| 1    | Black | RMS-153  | 12.5            | 0.5-2.0          | 3.0-5.0         | 19.8 17.0 7.1   | RP740-ND          | 1.16 .97   | LTG-199017      |
|      |       |          | 16.0            | 1.0-4.0          | 5.0-7.0         | 21.0 18.9 6.2   | RP741-ND          | 2.14 1.43  | LTG-39897       |
|      |       |          | 19.0            | 1.0-4.0          | 7.0-10.0        | 23.9 19.6 6.1   | RP742-ND          | .71 .47    | LTG-34715       |
| 2    | Gray  | RMS-125  | 23.0            | 1.0-4.0          | 10.0-14.0       | 27.9 22.9 6.6   | RP743-ND          | 3.01 2.01  | LTG-34716       |
|      |       |          | 29.0            | 1.0-4.0          | 14.0-20.0       | 35.8 24.4 6.6   | RP744-ND          | 3.55 2.37  | LTG-43021       |

## Locking Circuit Board Supports

### Features:

- Both ends lock by hand; no tools required
- Strong, dependable grip
- Material: Nylon 6/6
- Color: Natural

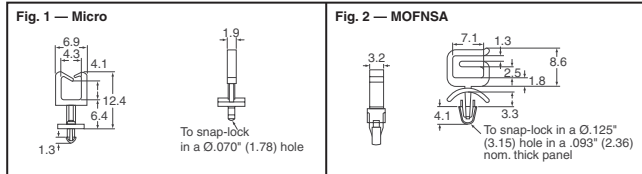


| Dim. A (mm) | Digi-Key Part No. | Pricing |       |        |        | Richco Part No. |
|-------------|-------------------|---------|-------|--------|--------|-----------------|
|             |                   | 10      | 100   | 500    | 1,000  |                 |
| 4.57        | RP425-ND          | 2.19    | 18.24 | 72.96  | 109.44 | LCBS-3          |
| 6.35        | RP426-ND          | 2.33    | 19.41 | 77.62  | 116.43 | LCBS-4          |
| 9.40        | RP428-ND          | 2.45    | 20.38 | 81.50  | 122.25 | LCBS-6          |
| 10.92       | RP429-ND          | 2.54    | 21.20 | 84.78  | 127.17 | LCBS-7          |
| 12.70       | RP430-ND          | 2.63    | 21.92 | 87.66  | 131.49 | LCBS-8          |
| 15.75       | RP431-ND          | 2.81    | 23.44 | 93.76  | 140.64 | LCBS-10         |
| 19.05       | RP432-ND          | 3.00    | 24.99 | 99.96  | 149.94 | LCBS-12         |
| 25.40       | RP434-ND          | 3.37    | 28.10 | 112.40 | 168.60 | LCBS-16         |

## Wire Saddle

### Features:

Wire Saddles are ideal for routing wires or optical fiber. Wires can be easily inserted into the top side of the saddle to protect them from abrasion. The **Micro** is ideal for low profile applications and takes up very little real estate. The **MOFNSA** is designed to snap into a .125" diameter hole in a .093" thick panel for applications that require a thicker board than the standard 1/16" board.

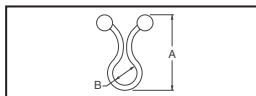


| Hole Dia. Inch (mm)                               | Panel Thickness Inch (mm) | Digi-Key Part No. | Price Each  | Richco Part No. |
|---|---------------------------|-------------------|-------------|-----------------|
|   |                           |                   | 10 100 500  |                 |
| <b>Fig. 1 — Standoff Micro Wire Saddle</b>        |                           |                   |             |                 |
| .070 (1.75)                                       | .062 (1.57)               | RP738-ND          | .32 .27 .21 | SMWS-1-01       |
| .070 (1.75)                                       | .093 (2.36)               | RP739-ND          | .32 .27 .21 | SMWS-1-01       |
| <b>Fig. 2 — Mini Optical Fiber Network Saddle</b> |                           |                   |             |                 |
| .125 (3.18)                                       | .093 (2.36)               | RP737-ND          | .25 .21 .17 | MOFNSA-2-01     |

## Twist-Lok — TL Series

### Features:

- Twist to secure wire bundles
- Material: Nylon 6/6, RMS-01
- Color: Natural

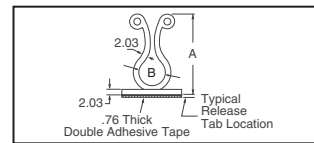


| "A" Overall Height (mm) | "B" Wire Bundle Dia. (mm) | Digi-Key Part No. | Price Each        | Richco Part No. |
|-------------------------|---------------------------|-------------------|-------------------|-----------------|
|                         |                           |                   | 25 100 1,000      |                 |
| 22.86                   | 5.08 - 7.62               | RP600-ND          | 2.67 9.14 54.83   | TL-250          |
| 26.16                   | 7.62 - 10.16              | RP601-ND          | 2.85 9.77 58.64   | TL-350          |
| 30.48                   | 10.16 - 12.70             | RP602-ND          | 3.07 10.54 63.22  | TL-450          |
| 33.78                   | 13.97 - 16.51             | RP603-ND          | 3.21 11.00 65.99  | TL-600          |
| 39.37                   | 17.78 - 20.32             | RP604-ND          | 3.73 12.78 76.68  | TL-750          |
| 43.18                   | 25.40 Maximum             | RP605-ND          | 3.83 13.14 78.84  | TL-950          |
| 55.63                   | 30.23 Maximum             | RP606-ND          | 5.19 17.80 106.78 | TL-1125         |
| 68.07                   | 36.58 Maximum             | RP607-ND          | 6.18 21.18 127.08 | TL-1375         |
| 74.42                   | 39.62 Maximum             | RP608-ND          | 7.67 26.29 157.75 | TL-1500         |
| 87.63                   | 45.97 Maximum             | RP609-ND          | 8.13 27.88 167.29 | TL-1750         |

## Kurly-Lok On Base — KLB Series

### Features:

- Adhesive backing, RMS-15
- Material: Nylon 6/6, RMS-01
- Color: Natural

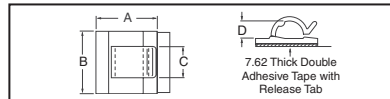


| "A" Overall Height (mm) | "B" Wire Bundle Dia. (mm) | Digi-Key Part No. | Price Each         | Richco Part No. |
|-------------------------|---------------------------|-------------------|--------------------|-----------------|
|                         |                           |                   | 25 100 1,000       |                 |
| 27.18                   | 7.62 - 10.16              | RP610-ND          | 12.04 41.27 247.61 | KLB-350A-RT     |
| 31.24                   | 10.16 - 12.70             | RP611-ND          | 13.31 45.63 273.78 | KLB-450A-RT     |
| 40.13                   | 17.78 - 20.32             | RP612-ND          | 13.99 47.95 287.71 | KLB-750A-RT     |

## Wire Cord Klip — WCK Series

### Features:

- Adhesive backing for quick mounting
- Material: Nylon 6/6, RMS-01
- Color: Natural

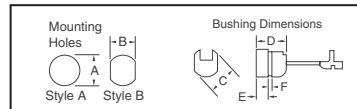


| Hole Dia. (mm)      | Dimensions (mm) |       |       |       | Digi-Key Part No. | Pricing |       |        | Richco Part No. |
|---------------------|-----------------|-------|-------|-------|-------------------|---------|-------|--------|-----------------|
|                     | A               | B     | C     | D     |                   | 25      | 100   | 1,000  |                 |
| <b>With Tape</b>    |                 |       |       |       |                   |         |       |        |                 |
| 4.57                | 16.00           | 15.75 | 7.87  | 4.06  | RP617-ND          | 13.31   | 45.65 | 273.89 | WCK-180-01A-RT  |
| 11.43               | 25.15           | 25.15 | 11.94 | 7.11  | RP618-ND          | 23.37   | 80.13 | 480.78 | WCK-460-01A-RT  |
| 18.29               | 25.40           | 25.40 | 12.70 | 13.46 | RP619-ND          | 29.06   | 99.64 | 597.82 | WCK-720-01A-RT  |
| <b>Without Tape</b> |                 |       |       |       |                   |         |       |        |                 |
| 18.29               | 25.40           | 25.40 | 12.70 | 13.46 | RP622-ND          | 24.01   | 82.33 | 493.96 | WCK-720-01      |

## Strain Relief Bushings — SRB-F and SRB-R Series

### Features:

- Bushing eliminates strain and wear on wires and cords
- Withstands temperatures to 150°F (65°C)
- Material: Nylon 6/6, RMS-04
- Color: Black



| Digi-Key Part No. | Approx. Wire Size (mm) | Mounting Holes (mm) |         | Bushing Dimensions (mm) |       |      |      |
|-------------------|------------------------|---------------------|---------|-------------------------|-------|------|------|
|                   |                        | Style A             | Style B | C                       | D     | E    | F*   |
| RP461-ND          | 2.79 x 5.33            | 9.52                | 8.76    | 10.79                   | 10.41 | 3.94 | 1.57 |
|                   | 2.29 x 4.57            |                     |         |                         |       |      |      |
| RP462-ND          | 4.09 x 7.62            | 11.81               | 14.48   | 12.70                   | 4.34  | 2.54 |      |
|                   | 3.81 x 7.11            |                     |         |                         |       |      |      |
| RP463-ND          | 4.06 x 9.40            | 14.27               | 13.46   | 15.49                   | 15.24 | 6.10 | 3.30 |
|                   | 3.81 x 8.64            |                     |         |                         |       |      |      |
|                   | 5.08 x 9.40            |                     |         |                         |       |      |      |
|                   | 4.57 x 8.89            |                     |         |                         |       |      |      |
| RP464-ND          | 4.83 x 7.62            | 12.70               | 11.58   | 13.84                   | 10.19 | 3.61 | 1.80 |
|                   | 3.81 x 7.11            |                     |         |                         |       |      |      |
|                   | 4.06 x 7.62            |                     |         |                         |       |      |      |
| RP465-ND          | 6.35                   | 11.81               | 14.22   | 10.92                   | 4.19  | 2.54 |      |
|                   | 6.73                   |                     |         |                         |       |      |      |
|                   | 7.37                   |                     |         |                         |       |      |      |
|                   | 6.86                   |                     |         |                         |       |      |      |
| RP466-ND          | 8.25                   | 14.48               | 18.45   | 17.27                   | 6.98  | 3.18 |      |
|                   | 7.62                   |                     |         |                         |       |      |      |
|                   | 9.02                   |                     |         |                         |       |      |      |
|                   | 8.38                   |                     |         |                         |       |      |      |

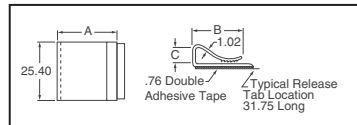
\* Maximum Panel Thickness

| Digi-Key Part No. | Pricing          |       |        |           | Richco Part No. |
|-------------------|------------------|-------|--------|-----------|-----------------|
|                   | 25               | 100   | 1,000  | 5,000     |                 |
| RP461-ND          | 10.54            | 36.12 | 216.72 | 174.58/M  | SRB-F-2         |
| RP462-ND          | 4.00             | 13.73 | 82.37  | 66.36/M   | SRB-F-4         |
| RP463-ND          | 13.35            | 45.78 | 274.68 | 221.27/M  | SRB-F-5         |
| RP464-ND          | 3.26             | 11.18 | 67.10  | 54.06/M   | SRB-F-7         |
| RP465-ND          | 3.64             | 12.49 | 74.92  | 60.35/M   | SRB-R-5         |
| RP466-ND          | 8.09             | 27.73 | 166.36 | 134.01/M  | SRB-R-6         |
| RPSRPL-ND         | SRB Pincher Tool |       |        | \$95.43/1 | SRPL-2          |

## C-Type Flat Cable Clamps — CFCC Series

### Features:

- Designed for routing flat ribbon cable
- Serrated grip to prevent slippage
- Adhesive backing for quick mount in any direction
- Material: Noryl-White, RMS-05; PVC-Gray, RMS-04

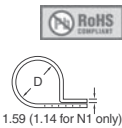
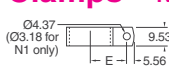


| Material       | Dimensions (mm) |       |      | Digi-Key Part No. | Pricing |       |        | Richco Part No. |
|----------------|-----------------|-------|------|-------------------|---------|-------|--------|-----------------|
|                | A               | B     | C    |                   | 25      | 100   | 1,000  |                 |
| Noryl-White    | 14.27           | 12.45 | 4.57 | RP391-ND          | 11.89   | 40.76 | 244.58 | CFCC-3-05A-RT   |
|                | 14.27           | 10.16 | 6.35 | RP392-ND          | 15.09   | 51.73 | 310.39 | CFCC-4-05A-RT   |
|                | 26.97           | 22.35 | 6.35 | RP393-ND          | 18.83   | 64.56 | 387.36 | CFCC-8-05A-RT   |
| Rigid PVC-Gray | 26.97           | 22.35 | 6.35 | RP394-ND          | 14.53   | 49.80 | 298.80 | CFCC-8-04A-RT   |

More Product Available Online: [www.digkey.com](http://www.digkey.com)

# Richco Cable Clamps — N Series

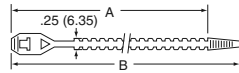
- Features:**  
 • Material: Nylon 6/6, RMS-01  
 • Colors: Natural and Black



| Description     | Dimensions (mm) |       | Digi-Key Part No. | Pricing |      |       | Richco Part No. |
|-----------------|-----------------|-------|-------------------|---------|------|-------|-----------------|
|                 | D               | E     |                   | 25      | 100  | 1,000 |                 |
| Black, RMS-49   | 1.60            | 6.86  | RP322-ND          | 1.66    | 5.69 | 34.16 | N-1-BK          |
|                 | 3.18            | 8.33  | RP323-ND          | 1.69    | 5.81 | 34.85 | N-2-BK          |
|                 | 4.78            | 9.91  | RP324-ND          | 1.94    | 6.67 | 40.00 | N-3-BK          |
|                 | 6.35            | 10.69 | RP325-ND          | 2.02    | 6.93 | 41.58 | N-4-BK          |
|                 | 7.95            | 11.51 | RP326-ND          | 2.04    | 7.00 | 42.01 | N-5-BK          |
|                 | 9.52            | 12.29 | RP327-ND          | 2.22    | 7.60 | 45.58 | N-6-BK          |
|                 | 11.13           | 11.99 | RP328-ND          | 2.30    | 7.88 | 47.30 | N-7-BK          |
| Natural, RMS-01 | 1.60            | 6.86  | RP314-ND          | 1.85    | 6.33 | 37.98 | N-1             |
|                 | 3.18            | 8.33  | RP315-ND          | 1.88    | 6.46 | 38.74 | N-2             |
|                 | 4.78            | 9.91  | RP316-ND          | 2.16    | 7.40 | 44.42 | N-3             |
|                 | 6.35            | 10.69 | RP317-ND          | 2.24    | 7.69 | 46.15 | N-4             |
|                 | 7.95            | 11.51 | RP318-ND          | 2.27    | 7.79 | 46.73 | N-5             |
|                 | 9.52            | 12.29 | RP319-ND          | 2.56    | 8.78 | 52.70 | N-6-173         |
|                 | 11.13           | 11.99 | RP320-ND          | 2.56    | 8.77 | 52.60 | N-7             |
|                 | 12.70           | 14.27 | RP321-ND          | 2.58    | 8.86 | 53.17 | N-8             |

## Hanking Ties

- Features:**  
 • Wrap electrical cords for shipping and packaging  
 • Material: Polyethylene  
 • Color: Natural




| Max. Bundle Diameter (mm) | Dimensions (mm) |              | Digi-Key Part No. | Price Per Package |        | Richco Part No. |
|---------------------------|-----------------|--------------|-------------------|-------------------|--------|-----------------|
|                           | A               | B            |                   | 100               | 1,000  |                 |
| .9 (22.86)                | 3.2 (81.28)     | 3.9 (99.06)  | RP701-ND          | 21.38             | 128.30 | HT-3.9          |
| 1.4 (35.56)               | 5.2 (132.08)    | 5.9 (149.86) | RP703-ND          | 26.87             | 161.24 | HT-5.9          |

• RoHS Compliant


## Wrap-It-Ties

- Features:**  
 • Easy to use permanent lock  
 • Strong, one-piece construction  
 • Serviceable to 185°F (85°C)  
 • UL recognized #E71558



Wire Tie Gun

RPWTA-ND .....\$13.07



Economy Installation Tool

RPWTG-ND .....\$57.11

† Replace □ with "C" for package of 100, "M" for package of 1,000.

| Max. Bundle Diameter (in.)                               | Approx. Length (in.) | Min. Loop Tensile Strength (lbs.) | Approx. Width (in.) | Color   | Digi-Key Part No. | Package Size           |                         | Richco Part No. |
|--|----------------------|-----------------------------------|---------------------|---------|-------------------|------------------------|-------------------------|-----------------|
|  |                      |                                   |                     |         |                   | Price Per Pkg. C = 100 | Price Per Pkg. M = 1000 |                 |
| <b>Nylon 6/6</b>   |                      |                                   |                     |         |                   |                        |                         |                 |
| 0.6  | 3.25                 | 18                                | .10                 | Natural | RP101□-ND         | 2.89                   | 16.52                   | WIT-18SF        |
| 0.6  | 3.25                 | 18                                | .10                 | Red     | RP101RDM-ND       | —                      | 18.07                   | WIT-18SF-RD     |
| 0.7  | 4.5                  | 18                                | .10                 | Natural | RP102□-ND         | 3.22                   | 18.36                   | WIT-18R         |
| 0.7  | 4.5                  | 18                                | .10                 | Blue    | RP102BL□-ND       | 3.29                   | 18.76                   | WIT-18R-BL      |
| 0.7  | 4.5                  | 18                                | .10                 | Green   | RP102GN□-ND       | 4.89                   | 18.76                   | WIT-18R-GN      |
| 0.7  | 4.5                  | 18                                | .10                 | Red     | RP102RD□-ND       | 3.29                   | 18.76                   | WIT-18R-RD      |
| 1.3  | 5.75                 | 18                                | .10                 | Natural | RP102YL□-ND       | 3.29                   | 18.76                   | WIT-18R-YL      |
| 2.1  | 8.0                  | 18                                | .10                 | Natural | RP103□-ND         | 5.01                   | 26.66                   | WIT-18V         |
| 1.2  | 5.75                 | 30                                | .14                 | Natural | RP104□-ND         | 6.04                   | 34.52                   | WIT-30R         |
| 1.2  | 5.75                 | 30                                | .14                 | Blue    | RP104BL□-ND       | 6.57                   | 35.24                   | WIT-30R-BL      |
| 1.2  | 5.75                 | 30                                | .14                 | Green   | RP104GN□-ND       | 9.00                   | 35.24                   | WIT-30R-GN      |
| 1.2  | 5.75                 | 30                                | .14                 | Red     | RP104RD□-ND       | 5.87                   | 35.24                   | WIT-30R-RD      |
| 1.2  | 5.75                 | 30                                | .14                 | Yellow  | RP104YL□-ND       | 6.17                   | 35.24                   | WIT-30R-YL      |
| 1.8  | 7.3                  | 30                                | .14                 | Natural | RP105□-ND         | 6.49                   | 37.08                   | WIT-30L         |
| 1.8  | 7.3                  | 30                                | .14                 | Green   | RP105GN□-ND       | 9.62                   | —                       | WIT-30L-GN      |
| 1.8  | 7.3                  | 30                                | .14                 | Yellow  | RP105YL□-ND       | 7.16                   | —                       | WIT-30L-YL      |
| 0.7  | 4.5                  | 40                                | .14                 | Natural | RP214□-ND         | 5.98                   | 33.41                   | WIT-40S         |
| 1.2  | 5.75                 | 40                                | .14                 | Natural | RP106□-ND         | 7.01                   | 40.03                   | WIT-40R         |
| 1.2  | 5.75                 | 40                                | .14                 | Blue    | RP106BL□-ND       | 7.70                   | 39.10                   | WIT-40R-BL      |
| 1.2  | 5.75                 | 40                                | .14                 | Green   | RP106GN□-ND       | 7.70                   | 39.10                   | WIT-40R-GN      |
| 1.2  | 5.75                 | 40                                | .14                 | Red     | RP106RD□-ND       | 7.70                   | 39.10                   | WIT-40R-RD      |
| 1.2  | 5.75                 | 40                                | .14                 | Yellow  | RP106YL□-ND       | 7.70                   | 35.60                   | WIT-40R-YL      |
| 1.8  | 7.3                  | 40                                | .14                 | Natural | RP107□-ND         | 8.74                   | 49.93                   | WIT-40L         |
| 1.8  | 7.3                  | 40                                | .14                 | Green   | RP107GN□-ND       | 9.59                   | 48.71                   | WIT-40L-GN      |
| 1.8  | 7.3                  | 40                                | .14                 | Red     | RP107RD□-ND       | 9.59                   | 48.71                   | WIT-40L-RD      |
| 3.1  | 11.1                 | 40                                | .15                 | Natural | RP215□-ND         | 15.17                  | 86.65                   | WIT-40VL        |
| 1.5  | 6.0                  | 50                                | .19                 | Natural | RP108□-ND         | 7.13                   | 40.75                   | WIT-50S         |
| 1.5  | 6.0                  | 50                                | .19                 | Green   | RP108GN□-ND       | 7.84                   | —                       | WIT-50S-GN      |
| 1.5  | 6.0                  | 50                                | .19                 | Red     | RP108RD□-ND       | 7.84                   | —                       | WIT-50S-RD      |
| 1.5  | 6.0                  | 50                                | .19                 | Yellow  | RP108YL□-ND       | 10.69                  | —                       | WIT-50S-YL      |
| 2.0  | 8.0                  | 50                                | .19                 | Natural | RP109□-ND         | 8.09                   | 46.26                   | WIT-50R         |
| 2.0  | 8.0                  | 50                                | .19                 | Blue    | RP109BL□-ND       | 8.44                   | 48.20                   | WIT-50R-BL      |
| 2.0  | 8.0                  | 50                                | .19                 | Green   | RP109GN□-ND       | 8.44                   | 48.20                   | WIT-50R-GN      |
| 2.0  | 8.0                  | 50                                | .19                 | Red     | RP109RD□-ND       | 12.31                  | 48.20                   | WIT-50R-RD      |
| 2.0  | 8.0                  | 50                                | .19                 | Yellow  | RP109YL□-ND       | 8.44                   | 48.20                   | WIT-50R-YL      |
| 4.5  | 15.3                 | 50                                | .18                 | Natural | RP110□-ND         | 14.46                  | 82.62                   | WIT-50L         |
| 2.7  | 10.7                 | 60                                | .18                 | Natural | RP216□-ND         | 12.47                  | 71.24                   | WIT-60R         |
| 4.2  | 15.06                | 120                               | .30                 | Natural | RP111C-ND         | 34.07                  | —                       | WIT-120R        |
| <b>UV Stabilized Nylon 6/6 — Exterior or Outdoor Use</b> |                      |                                   |                     |         |                   |                        |                         |                 |
| 0.6  | 3.25                 | 18                                | .10                 | Black   | RP201□-ND         | 3.22                   | 18.36                   | WIT-18SF-UVB    |
| 0.7  | 4.5                  | 18                                | .10                 | Black   | RP202□-ND         | 3.53                   | 20.20                   | WIT-18R-UVB     |
| 2.1  | 8.0                  | 18                                | .10                 | Black   | RP203M-ND         | —                      | 31.21                   | WIT-18V-UVB     |
| 1.2  | 5.75                 | 30                                | .14                 | Black   | RP204□-ND         | 6.68                   | 38.20                   | WIT-30R-UVB     |
| 1.8  | 7.3                  | 30                                | .14                 | Black   | RP205□-ND         | 7.20                   | 41.11                   | WIT-30L-UVB     |
| 1.2  | 5.75                 | 40                                | .14                 | Black   | RP206□-ND         | 8.64                   | 44.06                   | WIT-40R-UVB     |
| 1.8  | 7.3                  | 40                                | .14                 | Black   | RP207□-ND         | 9.58                   | 54.72                   | WIT-40L-UVB     |
| 1.5  | 6.0                  | 50                                | .19                 | Black   | RP208□-ND         | 7.84                   | 44.78                   | WIT-50S-UVB     |
| 2.0  | 8.0                  | 50                                | .19                 | Black   | RP209□-ND         | 8.93                   | 51.05                   | WIT-50R-UVB     |

| Max. Bundle Diameter (in.) | Approx. Length (in.) | Min. Loop Tensile Strength (lbs.) | Approx. Width (in.) | Color | Digi-Key Part No. | Package Size           |                         | Richco Part No. |
|----------------------------|----------------------|-----------------------------------|---------------------|-------|-------------------|------------------------|-------------------------|-----------------|
|                            |                      |                                   |                     |       |                   | Price Per Pkg. C = 100 | Price Per Pkg. M = 1000 |                 |
| 4.5                        | 15.3                 | 50                                | .18                 | Black | RP210□-ND         | 15.94                  | 91.08                   | WIT-50L-UVB     |
| 4.2                        | 15.06                | 120                               | .30                 | Black | RP211C-ND         | 37.08                  | —                       | WIT-120R-UVB    |

### Nylon 6/6, Size 10 — Screw Mount

|     |       |    |     |         |           |       |        |               |
|-----|-------|----|-----|---------|-----------|-------|--------|---------------|
| 1.5 | 6.75  | 50 | .19 | Natural | RP224□-ND | —     | 94.00  | WITSH-10-50MS |
| 2   | 8.69  | 50 | .19 | Natural | RP225□-ND | 18.55 | 109.08 | WITSH-10-50MR |
| 3   | 11.25 | 50 | .19 | Natural | RP226□-ND | 21.69 | 112.36 | WITSH-10-50MR |

### Nylon 6/6, Release Tab

|      |      |    |     |         |           |       |        |             |
|------|------|----|-----|---------|-----------|-------|--------|-------------|
| 1.25 | 5.5  | 40 | .21 | Natural | RP217□-ND | —     | 87.98  | WIT-RT-0550 |
| 2    | 8.0  | 40 | .21 | Natural | RP218□-ND | 16.97 | 96.98  | WIT-RT-0800 |
| 2.5  | 10.5 | 40 | .21 | Natural | RP219□-ND | 29.75 | 146.59 | WIT-RT-1050 |

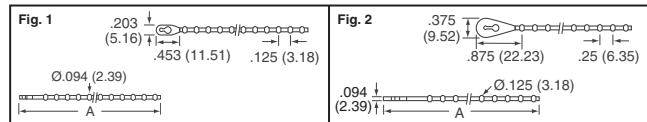
| Max. Bundle Diameter (in.) | Approx. Length (in.) | Min. Loop Tensile Strength (lbs.) | Approx. Width (in.) | Color   | Digi-Key Part No. | Pricing |        | Richco Part No. |
|----------------------------|----------------------|-----------------------------------|---------------------|---------|-------------------|---------|--------|-----------------|
|                            |                      |                                   |                     |         |                   | 25      | 100    |                 |
| 4                          | 15.25                | 250                               | .52                 | Natural | RP221-ND          | 40.41   | 138.56 | WIT-RT-1525     |
| 6                          | 21.5                 | 250                               | .52                 | Natural | RP222-ND          | 46.20   | 158.39 | WIT-RT-2150     |
| 8                          | 27.75                | 250                               | .52                 | Natural | RP223-ND          | 54.32   | 186.24 | WIT-RT-2775     |

### Nylon 6/6, Release Tab (Large Size)

|   |       |     |     |         |          |       |        |             |
|---|-------|-----|-----|---------|----------|-------|--------|-------------|
| 4 | 15.25 | 250 | .52 | Natural | RP221-ND | 40.41 | 138.56 | WIT-RT-1525 |
| 6 | 21.5  | 250 | .52 | Natural | RP222-ND | 46.20 | 158.39 | WIT-RT-2150 |
| 8 | 27.75 | 250 | .52 | Natural | RP223-ND | 54.32 | 186.24 | WIT-RT-2775 |

## Beaded Ties

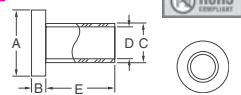
- Features:** • Easy to install and release • Material: Nylon 6/6 • Color: Natural



| Fig. | Dim "A" (approx.) Inch (mm) | Digi-Key Part No. | Price Per Package |        | Richco Part No. |
|------|-----------------------------|-------------------|-------------------|--------|-----------------|
|      |                             |                   | 100               | 1,000  |                 |
| 1    | 4.0 (101.60)                | RP731-ND          | 8.50              | 50.98  | BT-4-01-NT      |
|      | 6.0 (152.40)                | RP733-ND          | 14.84             | 89.06  | BT-6-01-NT      |
| 2    | 8.75 (222.25)               | RP734-ND          | 20.56             | 123.37 | BT-8-01-NT      |
|      | 10.75 (273.05)              | RP735-ND          | 25.66             | 153.97 | BT-10-01-NT     |
|      | 12.75 (323.85)              | RP736-ND          | 29.28             | 175.68 | BT-12-01-NT     |

## Molded Nylon Insulators — MNI Series

- Features:** • Use as screw insulators and in many bushing applications  
 • Lightweight • High dielectric strength • Resistant to corrosion and abrasion • Material: Nylon 6/6, RMS-48 • Color: Natural



| Screw Size | Approx. Met. Equiv. | Dimensions (Inch) |      |      |      |      | Digi-Key Part No. | Pricing  |       |        | Richco Part No. |           |
|------------|---------------------|-------------------|------|------|------|------|-------------------|----------|-------|--------|-----------------|-----------|
|            |                     | A                 | B    | C    | D    | E    |                   | 25       | 100   | 1,000  |                 |           |
| #2         | M2.2                | .181              | .047 | .120 | .090 | .031 | RP330-ND          | 5.83     | 20.00 | 120.02 | MNI #2-2        |           |
|            |                     | .235              | .047 | .145 | .115 | .031 | RP337-ND          | 5.83     | 20.00 | 120.02 | MNI #4-2        |           |
|            |                     | .252              | .047 | .140 | .115 | .046 | RP338-ND          | 5.83     | 20.00 | 120.02 | MNI #4-3        |           |
|            |                     | .235              | .047 | .145 | .115 | .063 | RP339-ND          | 5.83     | 20.00 | 120.02 | MNI #4-4        |           |
|            |                     | .252              | .047 | .140 | .115 | .084 | RP340-ND          | 5.83     | 20.00 | 120.02 | MNI #4-5        |           |
|            |                     | .252              | .047 | .140 | .115 | .093 | RP341-ND          | 5.83     | 20.00 | 120.02 | MNI #4-6        |           |
|            | #4                  | M3                | .235 | .047 | .145 | .115 | .125              | RP342-ND | 5.83  | 20.00  | 120.02          | MNI #4-8  |
|            |                     |                   | .252 | .047 | .140 | .115 | .156              | RP343-ND | 5.83  | 20.00  | 120.02          | MNI #4-10 |
|            |                     |                   | .235 | .047 | .145 | .115 | .187              | RP344-ND | 5.83  | 20.00  | 120.02          | MNI #4-12 |
|            |                     |                   | .252 | .047 | .140 | .115 | .250              | RP345-ND | 5.83  | 20.00  | 120.02          | MNI #4-16 |
|            |                     |                   | .235 | .047 | .145 | .115 | .375              | RP346-ND | 5.83  | 20.00  | 120.02          | MNI #4-24 |
|            |                     |                   | .370 | .050 | .236 | .126 | .050              | RP347-ND | 7.10  | 24.34  | 146.05          | MNI #5-3  |
| #6         | M3.5                | .290              | .047 | .170 | .140 | .031 | RP348-ND          | 5.84     | 20.03 | 120.20 | MNI #6-2        |           |
|            |                     | .290              | .047 | .170 | .140 | .063 | RP349-ND          | 5.84     | 20.03 | 120.20 | MNI #6-4        |           |
|            |                     | .290              | .047 | .170 | .140 | .093 | RP350-ND          | 5.84     | 20.03 | 120.20 | MNI #6-6        |           |