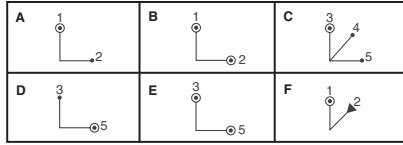
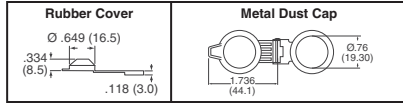




Keylock Switches KO Series

Materials: • Housing and Cylinder: Die cast zinc alloy • Mounting nut and two keys



● = Detent Position ○ = Keypull Possible ▲ = Momentary

Series	Rated	Insulation Resistance
KO103	1A @ 125VAC; 0.5A @ 250VAC	200MΩ min.
KO106	1A @ 125VAC; 0.5A @ 250VAC	200MΩ min.
KO129	4A @ 125VAC; 2A @ 250VAC	200MΩ min.
KO130	4A @ 125VAC; 2A @ 250VAC	200MΩ min.

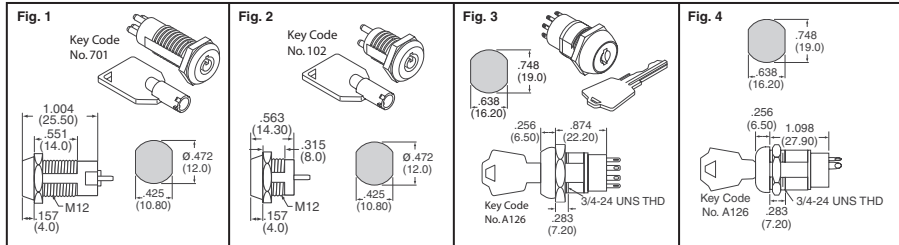
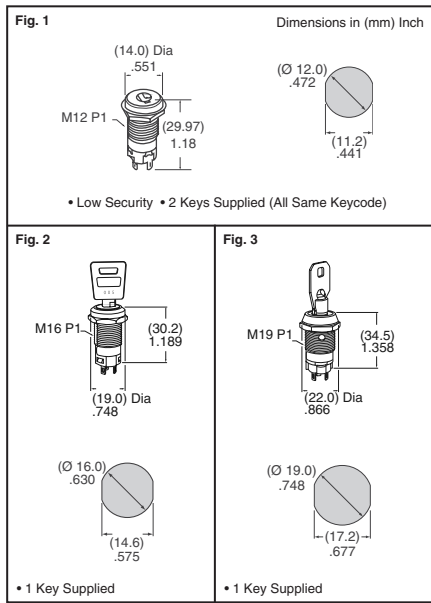


Fig.	Lock Configuration	No. of Poles	Key Pull Possible	Switch Type	Amp Rating @ 125 VAC	Termination	Digi-Key Part No.	1	10	100	E-Switch Part No.
1A	90° Indexing	SPDT	1	On-On	1	Solder	EG2623-ND	5.52	4.97	3.98	KO103C701
1B	90° Indexing	SPDT	1 and 2	On-On	1	Solder	EG2624-ND	5.52	4.97	3.98	KO103D701
1B	90° Indexing	SPST	1 and 2	Off-On	1	Solder	EG2625-ND	2.65	2.39	1.91	KO106A102
2B	90° Indexing	SP-3 pos.	3	On-On-On	4	Eyelet	EG2626-ND	10.35	9.32	7.46	KO130AA126
3C	45°-45° Indexing	DP-3 pos.	3	On-On-On	4	Eyelet	EG2627-ND	10.98	9.89	7.91	KO130BA126
3D	90° Indexing	DPDT	3	On-On	4	Eyelet	EG2628-ND	10.35	9.32	7.46	KO130QA126
3E	90° Indexing	SPDT	3 and 5	On-On	4	Eyelet	EG2629-ND	11.57	10.42	8.33	KO130RA126
4F	45° Indexing	SPDT	1	On-Mom	4	Eyelet	EG2630-ND	13.25	11.93	9.54	KO129E
Covers											
Rubber Cover for KO103 Series							EG2631-ND	.74	.67	.54	KOC1
Metal Dust Cap for KO130 Series							EG2632-ND	3.54	3.19	2.55	KOM4
Replacement Keys											
Replacement Key, Keypull 701							EG4405-ND	1.23	1.11	.89	KOKEY701
Replacement Key, Keypull A126							EG4406-ND	1.23	1.11	.89	KOKEYA126
Replacement Key, Keypull 102							EG4407-ND	1.62	1.46	1.17	KOKEY102

NKK SWITCHES Keylock Switches

Features: • **SK series:** Short behind panel dimension - only 1.063" (27.0mm); Detent mechanism gives crisp, positive action for accurate switch setting • **CK series** High insulating material withstands over 15 kilovolts of electrostatic discharge, thus providing antistatic feature. Rugged, die cast housing designed for higher security requirements • **Specifications:** • Power Voltage: 3A @ 250V AC • Operating Temperature: -25°C ~ 70°C • Mechanical Life: 30,000 cycles minimum • Electrical Life: 10,000 cycles minimum • **Materials:** • Housing/Bushing: Zinc alloy with chrome plating for CKL series; Glass fiber reinforced PBT for CKM series

Fig.	Key Positions			Key Removable Positions	Digi-Key Part No.	Price Each	1	10	100	NKK Part No.
12mm Miniature Low Security (All same Keycodes)										
1	On	None	On	1, 3	360-1935-ND	12.71	9.21	8.20		SK12AAW01-RO
	On	None	On	1	360-1936-ND	12.71	9.21	8.20		SK12BAW01-RO
	On	Off	On	1, 2, 3	360-1937-ND	13.39	9.70	8.63		SK13DAW01-RO
	On	Off	On	2	360-1938-ND	13.39	9.70	8.63		SK13EAW01-RO
	Replacement Key for SK12 Switches, Marked 1201					360-1010-ND	2.56	1.52	1.36	
Replacement Key for SK13 Switches, Marked 1301					360-2289-ND	2.56	1.52	1.36		AT4082
16mm High Security Antistatic - Flat Key Version (10 Keycodes)										
2	On	None	On	1, 3	360-1447-ND	12.51	9.07	8.07		CKM12AFW01
	On	None	On	1	360-1448-ND	12.51	9.07	8.07		CKM12BFW01
	On	Off	On	2	360-1449-ND	13.51	9.83	8.91		CKM13EFW01
16mm High Security Antistatic - Tubular Key Version (25 Keycodes)										
2	On	None	On	1, 3	360-1450-ND	12.51	9.07	8.07		CKM12ATW01
	On	None	On	1	360-1451-ND	12.51	9.07	8.07		CKM12BTW01
	On	Off	On	2	360-1452-ND	13.51	9.83	8.91		CKM13ETW01
19mm High Security - Flat Key Version (25 Keycodes)										
3	On	None	On	1, 3	360-1453-ND	12.67	9.18	8.17		CKL12AFW01
	On	None	On	1	360-1454-ND	12.67	9.18	8.17		CKL12BFW01
	On	Off	On	2	360-1455-ND	13.66	9.94	9.01		CKL13EFW01
19mm High Security - Tubular Key Version (50 Keycodes)										
3	On	None	On	1, 3	360-1456-ND	12.67	9.18	8.17		CKL12ATW01
	On	None	On	1	360-1457-ND	12.67	9.18	8.17		CKL12BTW01
	On	Off	On	2	360-1458-ND	13.66	9.94	9.01		CKL13ETW01



Tyco Electronics Alocswitch Keylock Switchlocks

Authorized Distributor

Note: All Keylocks are supplied with 2 brass keys on a ring.

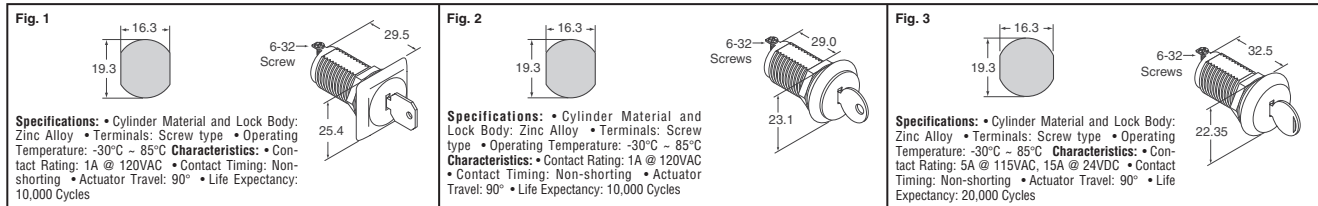


Fig.	Lock Configuration	Poles	Keypull Possible	Switch Type	Current	Terminal	Digi-Key Part No.	1	10	25	50	Alocswitch Part No.
1	90° Indexing	SPST	1, 2	On-Off	1A	6-32 Screw	450-1003-ND	17.17	15.70	14.72	14.23	2SKF132AEL01
			1 only				450-1005-ND	16.85	15.41	14.45	13.97	2SKF131AEL01
			1 only				450-1008-ND	23.66	21.64	20.28	19.61	2SKF231AEL01
2	90° Indexing	SPST	1, 2	On-Off	1A	6-32 Screw	450-1004-ND	18.46	16.88	15.83	15.30	2SWK132AL101
			1 only				450-1006-ND	21.89	20.02	18.77	18.14	2SWK131AL101
			1 only				450-1007-ND	16.22	14.84	13.91	13.45	2SWK231AL101
3	90° Indexing	SPST	1, 2	On-Off	5A	6-32 Screw	450-1011-ND	20.74	18.96	17.78	17.19	SWK12F315
			2 only				450-1010-ND	20.74	18.96	17.78	17.19	SWK121F315
			1 only				450-1009-ND	20.74	18.96	17.78	17.19	SWK123F315

More Product Available Online: www.digikey.com

Toll-Free: 1-800-344-4539 • Phone 218-681-6674 • Fax: 218-681-3380

(T083) 2067