

Dialight Through-Hole LEDs



Dimensions in mm

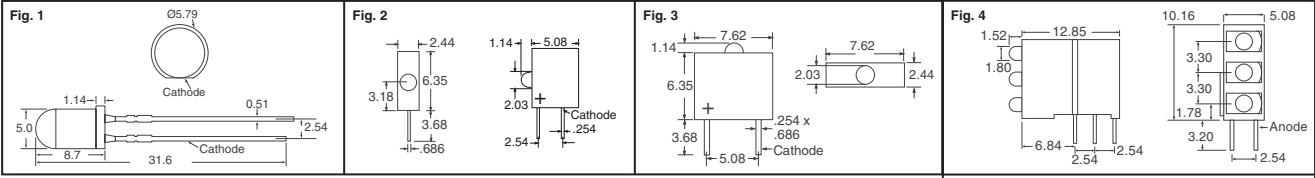
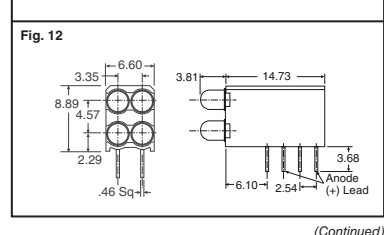
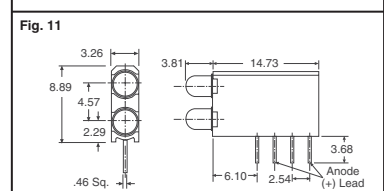
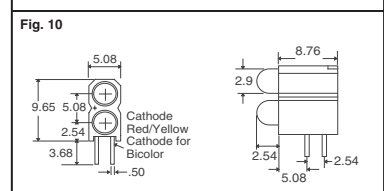
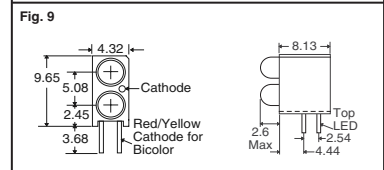
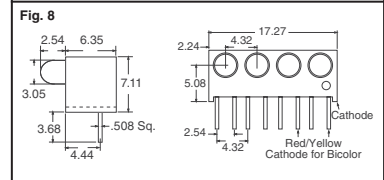
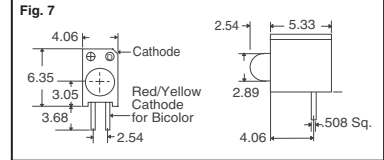
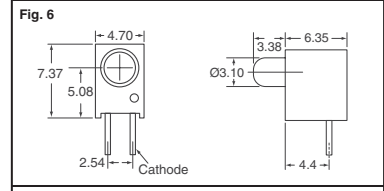
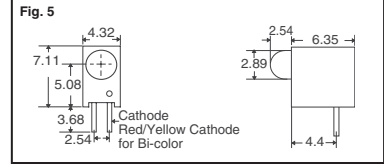


Fig.	Color	Wave Length peak (nm)	Typical I _o (mcd)	Typical V _f (V)	Typical I _f (mA)	Digi-Key Part No.	1	25	100	Dialight Part No.
1	Blue	470	1010	3.8	30.0	350-1563-ND	1.18	.91	.73	521-9946F
	White	—	1690	3.8	30.0	350-1564-ND	2.35	1.83	1.48	521-9948F
2	Red	650	1.2	1.6	20.0	350-1711-ND	1.16	.90	.72	555-2001F
	Green	565	1.0	2.4	20.0	350-1716-ND	1.05	.81	.65	555-2301F
	Yellow	583	2.0	2.2	20.0	350-1718-ND	1.18	.91	.73	555-2401F
	Red	650	1.9	5.0	6.0	350-1712-ND	1.21	.93	.75	555-2003F
	Red	650	0.9	5.0	3.0	350-1713-ND	1.23	.95	.76	555-2007F
	Red	650	0.6	5.0	1.0	350-1715-ND	1.21	.94	.76	555-2009F
	Green	565	2.5	5.0	4.7	350-1717-ND	1.18	.91	.73	555-2303F
	Yellow	583	2.1	5.0	4.7	350-1719-ND	1.21	.93	.75	555-2403F
	Red	650	0.9	24.0	3.0	350-1714-ND	1.26	.97	.78	555-2008F
	Red	650	1.2	1.6	20.0	350-1720-ND	1.21	.94	.75	555-3001F
3	Green	565	1.0	2.4	20.0	350-1725-ND	1.55	1.20	.96	555-3301F
	Yellow	583	2.0	2.2	20.0	350-1727-ND	1.55	1.20	.96	555-3401F
	Red	650	1.9	5.0	6.0	350-1721-ND	1.18	.92	.73	555-3003F
	Red	650	0.9	5.0	3.0	350-1722-ND	1.42	1.10	.88	555-3007F
	Red	650	0.6	5.0	1.0	350-1724-ND	1.50	1.16	.93	555-3009F
	Green	565	2.5	5.0	4.7	350-1726-ND	1.68	1.30	1.04	555-3303F
	Yellow	583	2.1	5.0	4.7	350-1728-ND	1.68	1.30	1.04	555-3403F
	Red	650	0.9	24.0	3.0	350-1723-ND	1.42	1.10	.88	555-3008F
	Red	650	1.9	5.0	6.0	350-1802-ND	5.49	4.28	3.46	555-5003F
	Red	650	1.2	1.6	20.0	350-1803-ND	4.83	3.76	3.05	555-5001F
4	Green	565	8.7	2.1	20.0	350-1806-ND	2.24	1.73	1.38	570-0100-222F
	Red	635	12.6	2.0	20.0	350-1807-ND	2.24	1.73	1.38	570-0100-111F
	Yellow	585	12.6	2.1	20.0	350-1808-ND	2.24	1.73	1.38	570-0100-333F
	Red/Yellow/Green	635/585/565	12.6/12.6/8.7	2.0/2.1/2.1	20.0	350-1809-ND	2.24	1.73	1.38	570-0100-132F
	Green	563	16.0	2.1	10.0	350-1810-ND	.69	.52	.43	551-0207F
	Yellow	585	6.3	2.1	10.0	350-1811-ND	.69	.52	.43	551-0307F
	Red	650	10.0	2.0	10.0	350-1812-ND	.69	.52	.43	551-0407F
	Green	565	8.0	5.0	12.0	350-1813-ND	.97	.75	.61	551-0607F
	Red	635	4.0	5.0	10.0	350-1814-ND	.97	.75	.61	551-0507F
	Yellow	583	8.0	5.0	10.0	350-1815-ND	.97	.75	.61	551-0707F
5	High Eff. Blue	428	12.0	3.5	20.0	350-1844-ND	2.40	1.87	1.51	551-0807F
	Red	635	1.8	1.8	2.0	350-1816-ND	.83	.64	.52	551-1107F
	Green	565	1.6	1.8	2.0	350-1817-ND	.83	.64	.52	551-1307F
	Yellow	583	1.6	1.9	2.0	350-1818-ND	.83	.64	.52	551-1207F
	Red/Green	635/565	5.0	2.0	10.0	350-1819-ND	1.18	.92	.73	551-3007F
	Yellow/Green	585/565	4.3/6.3	2.1/2.1	10.0	350-1820-ND	.97	.75	.60	551-3107F
	Blue	470	1000	3.6	30.0	350-1846-ND	4.75	3.70	2.99	551-4007F
	White	—	1270	3.6	30.0	350-1847-ND	8.57	6.52	5.49	551-4107F
	Green	563	16.0	2.1	10.0	350-1665-ND	.75	.58	.47	551-0209F
	Yellow	585	6.3	2.1	10.0	350-1667-ND	.75	.58	.47	551-0309F
7	Red	650	10.0	2.0	10.0	350-1669-ND	.75	.58	.47	551-0409F
	Orange	600	6.5	2.2	10.0	350-1682-ND	.83	.64	.52	551-2509F
	Red	635	4.0	5.0	10.0	350-1671-ND	1.08	.84	.67	551-0509F
	Green	565	8.0	5.0	12.0	350-1673-ND	1.08	.84	.67	551-0609F
	Yellow	583	8.0	5.0	10.0	350-1675-ND	1.08	.84	.67	551-0709F
	High Eff. Blue	428	12.0	3.5	20.0	350-1845-ND	2.40	1.87	1.51	551-0809F
	Red	635	1.8	1.8	2.0	350-1677-ND	.83	.64	.52	551-1109F
	Yellow	583	1.6	1.9	2.0	350-1679-ND	.83	.64	.52	551-1209F
	Green	565	1.6	1.8	2.0	350-1681-ND	.83	.64	.52	551-1309F
	Red/Green	635/565	5.0	2.0	10.0	350-1684-ND	1.35	1.04	.83	551-3009F
8	Yellow/Green	585/565	4.3/6.3	2.1	20.0	350-1685-ND	1.55	1.21	.96	551-3109F
	Green	563	16.0	2.1	10.0	350-1664-ND	2.59	2.02	1.64	551-0207-004F
	Yellow	585	6.3	2.1	10.0	350-1666-ND	2.59	2.02	1.64	551-0307-004F
	Red	650	10.0	2.0	10.0	350-1668-ND	2.41	1.86	1.48	551-0407-004F
	Green	565	8.0	5.0	12.0	350-1672-ND	3.27	2.55	2.06	551-0607-004F
	Red	635	1.8	1.8	2.0	350-1676-ND	2.68	2.09	1.69	551-1107-004F
	Yellow	583	1.6	1.9	2.0	350-1678-ND	3.37	2.63	2.13	551-1207-004F
	Green	565	1.6	1.8	2.0	350-1680-ND	3.37	2.63	2.13	551-1307-004F
	Red/Green	635/565	5.0	2.0	10.0	350-1683-ND	5.72	4.35	3.66	551-3007-004F
	Red	650	10.0	2.0	10.0	350-1821-ND	1.35	1.04	.83	553-0111F
9	Green	563	16.0	2.1	10.0	350-1825-ND	1.20	.93	.74	553-0122F
	Yellow	585	6.3	2.1	10.0	350-1826-ND	1.35	1.04	.83	553-0133F
	Grn.(top)/Red.(bot.)	563/650	16.0/10.0	2.1/2.0	10.0	350-1822-ND	1.04	.80	.65	553-0121F
	Grn.(top)/Yw.(bot.)	563/585	16.0/6.3	2.1/2.1	10.0	350-1823-ND	1.35	1.04	.83	553-0123F
	Ylw.(top)/Grn.(bot.)	585/563	6.3/16.0	2.1/2.1	10.0	350-1824-ND	1.35	1.04	.83	553-0132F
	High Efficiency Blue	428	12.0	3.5	20.0	350-1850-ND	4.42	3.44	2.79	553-0188F
	Red	635	1.8	1.8	2.0	350-1827-ND	1.48	1.14	.91	553-0211F
	Green	565	1.6	1.8	2.0	350-1828-ND	1.48	1.14	.91	553-0222F
	Yellow	583	1.6	1.9	2.0	350-1830-ND	1.48	1.14	.91	553-0233F
	Grn.(top)/Yw.(bot.)	565/583	1.6/1.6	1.8/1.9	2.0	350-1829-ND	1.48	1.14	.91	553-0223F
10	Green	565	8.0	5.0	12.0	350-1831-ND	1.31	1.02	.81	553-0322F
	Red	635	4.0	5.0	10.0	350-1832-ND	1.59	1.23	.98	553-0311F
	Yellow	583	8.0	5.0	10.0	350-1833-ND	1.59	1.23	.98	553-0333F
	2x Red/Green	635/565	5.0	2.0	10.0	350-1834-ND	1.97	1.53	1.22	553-0711F
	2x Yellow/Green	585/565	4.3/6.3	2.1/2.1	10.0	350-1835-ND	1.97	1.53	1.22	553-0744F
	Red	650	10.0	2.0	10.0	350-1698-ND	1.35	1.04	.83	553-0111-300F
	Green	563	16.0	2.1	10.0	350-1699-ND	1.35	1.04	.83	553-0122-300F
	Yellow	585	6.3	2.1	10.0	350-1700-ND	1.35	1.04	.83	553-0133-300F



(Continued)



Free shipping on orders over €65! All prices in euro and include duties. (EU2011-EN) 2621