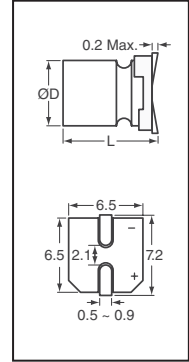




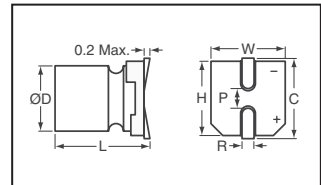
SL and SH Series Polymer Electrolytic Capacitors



Features: • By using Functional Polymer cathode, frequency and temperature characteristics are greatly improved • Low ESR at a high frequency range • High ripple current capability • Low profile type. (Height: 4.5mm Maximum and 5mm Maximum)
Applications: • Switching Power Supply and DC/DC Converter • Back up Power Supplies of CPU(VRM) • Miniature high Power Supply
Specifications: • Operating Temperature Range: -55°C ~ 105°C • Capacitance Tolerance: ± 20% • Leakage Current not to exceed the initial specified value

Rated Voltage	Rated Capacitance (μF, 120Hz)	Leakage Current (μA, 2min)	tanδ (120Hz)	ESR (mΩ, 100kHz)	Rated Ripple Current (mA, r.m.s.)	Case Size øDxL (mm)	Digi-Key Part No.	Cut Tape Price Each			Digi-Key Part No.	Tape and Reel Pricing 1,000		Nichicon Part No.
								1	10	100		Qty.	Pricing	
2.5	100	300	0.12	16	3500	6.3 x 4.2	493-3815-1-ND	.78	.66	.42	493-3815-2-ND	167.37	RSL0E101MCN1GB	
	220	300	0.12	16	3500	6.3 x 4.2	493-3816-1-ND	.83	.70	.52	493-3816-2-ND	229.83	RSL0E221MCN1GB	
	330	413	0.12	16	3500	6.3 x 4.2	493-3817-1-ND	.66	.57	.39	493-3817-2-ND	170.57	RSL0E331MCN1GB	
	390	488	0.12	20	3000	6.3 x 4.7	493-3818-1-ND	.69	.59	.40	493-3818-2-ND	175.38	RSH0E391MCN1GB	
6.3	100	315	0.12	18	3200	6.3 x 4.2	493-3819-1-ND	.95	.80	.51	493-3819-2-ND	202.60	RSL0J101MCN1GB	
	150	473	0.12	18	3200	6.3 x 4.2	493-3820-1-ND	.82	.69	.51	493-3820-2-ND	227.43	RSL0J151MCN1GB	
	220	693	0.12	18	3200	6.3 x 4.2	493-3821-1-ND	.67	.57	.39	493-3821-2-ND	171.37	RSL0J221MCN1GB	
	270	851	0.12	20	3000	6.3 x 4.7	493-3822-1-ND	.69	.59	.40	493-3822-2-ND	175.38	RSH0J271MCN1GB	
16	15	300	0.12	45	1900	6.3 x 4.2	493-3823-1-ND	1.08	.89	.72	493-3823-2-ND	323.52	RSL1C150MCN1GB	

PS and PA Series Polymer Electrolytic Capacitors



Features: • By using Functional Polymer cathode, frequency and temperature characteristics are greatly improved • Low ESR at a high frequency range • High ripple current capability • Long life and high reliability

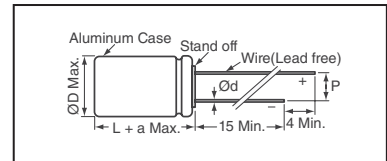
Applications: • Switching Power Supply and DC/DC Converter • Back up Power Supplies of CPU(VRM) • Miniature high Power Supply

Specifications: • Operating Temperature Range: -55°C ~ 105°C • Capacitance Tolerance: ± 20% • Leakage Current not to exceed the initial specified value

Size øD x L	W	H	C	P	R
6.3 x 5.7	6.5	6.5	7.2	2.1	0.5 - 0.9
8 x 6.7	8.3	8.3	9.0	3.2	0.8 - 1.1
8 x 11.7	8.3	8.3	9.0	3.2	0.8 - 1.1
10 x 7.7	10.3	10.3	11.0	4.6	0.8 - 1.1
10 x 12.4	10.3	10.3	11.0	4.6	0.8 - 1.1

Rated Voltage	Rated Capacitance (μF, 120Hz)	Leakage Current (μA, 2min)	tanδ (120Hz)	ESR (mΩ, 100kHz)	Rated Ripple Current (mA, r.m.s.)	Case Size øDxL (mm)	Digi-Key Part No.	Cut Tape Price Each			Digi-Key Part No.	Tape and Reel		Nichicon Part No.
								1	10	100		Qty.	Pricing	
2.5	680	425	0.12	13	4500	8 x 11.7	493-3824-1-ND	1.07	.88	.71	493-3824-2-ND	500	181.78	RPS0E681MCN1GS
	1,500	938	0.12	10	5500	10 x 12.4	493-3825-1-ND	1.15	.95	.77	493-3825-2-ND	400	184.50	RPS0E152MCN1GS
4.0	100	80	0.12	35	2200	6.3 x 5.7	493-3826-1-ND	.67	.57	.39	493-3826-2-ND	1,000	171.37	RPS0G101MCN1GS
	220	176	0.12	30	2700	8 x 6.7	493-3827-1-ND	.78	.67	.45	493-3827-2-ND	1,000	200.20	RPS0G221MCN1GS
	330	264	0.12	30	2700	8 x 6.7	493-3828-1-ND	.79	.68	.46	493-3828-2-ND	1,000	203.40	RPS0G331MCN1GS
	470	376	0.12	22	3800	10 x 7.7	493-3829-1-ND	.89	.75	.55	493-3829-2-ND	500	142.14	RPS0G471MCN1GS
	560	448	0.12	13	4500	8 x 11.7	493-3830-1-ND	.93	.78	.57	493-3830-2-ND	500	148.55	RPS0G561MCN1GS
	1,200	960	0.12	9	5400	10 x 12.4	493-3831-1-ND	1.10	.92	.68	493-3831-2-ND	500	174.97	RPS0G961MCN1GS
6.3	82	103	0.12	35	2200	6.3 x 5.7	493-3833-1-ND	.82	.70	.44	493-3833-2-ND	1,000	175.38	RPS0J820MCN1GS
	150	189	0.12	30	2600	8 x 6.7	493-3834-1-ND	.78	.67	.45	493-3834-2-ND	1,000	200.20	RPS0J151MCN1GS
	180	227	0.12	30	2600	8 x 6.7	493-3835-1-ND	.82	.70	.47	493-3835-2-ND	1,000	209.01	RPS0J181MCN1GS
	330	416	0.12	22	3600	10 x 7.7	493-3836-1-ND	1.00	.84	.62	493-3836-2-ND	500	160.16	RPS0J331MCN1GS
	470	592	0.15	15	4300	8 x 11.7	493-3837-1-ND	1.00	.84	.62	493-3837-2-ND	500	160.16	RPS0J471MCN1GS
	560	706	0.15	14	4400	8 x 11.7	493-3838-1-ND	1.03	.87	.64	493-3838-2-ND	500	165.77	RPS0J561MCN1GS
	680	673	0.15	13	5200	10 x 12.4	493-3839-1-ND	1.25	1.03	.83	493-3839-2-ND	400	199.24	RPS0J681MCN1GS
	820	775	0.15	12	5500	10 x 12.4	493-3840-1-ND	1.37	1.12	.91	493-3840-2-ND	400	218.46	RPS0J821MCN1GS
	1,000	945	0.15	12	5500	10 x 12.4	493-3841-1-ND	1.25	1.03	.83	493-3841-2-ND	400	199.24	RPS0J102MCN1GS
	10	47	94	0.12	40	2100	6.3 x 5.7	493-3842-1-ND	.66	.57	.39	493-3842-2-ND	1,000	168.97
56		112	0.12	40	2100	6.3 x 5.7	493-3843-1-ND	.66	.57	.39	493-3843-2-ND	1,000	168.97	RPS1A560MCN1GS
120		240	0.12	30	2600	8 x 6.7	493-3844-1-ND	.84	.72	.49	493-3844-2-ND	1,000	215.42	RPS1A121MCN1GS
270		540	0.12	25	3500	10 x 7.7	493-3845-1-ND	.90	.76	.56	493-3845-2-ND	500	144.94	RPS1A271MCN1GS
330		660	0.15	17	4000	8 x 11.7	493-3846-1-ND	.99	.84	.62	493-3846-2-ND	500	159.36	RPS1A331MCN1GS
560		840	0.15	13	5300	10 x 12.4	493-3847-1-ND	1.13	.93	.75	493-3847-2-ND	400	180.02	RPS1A561MCN1GS
16	39	125	0.10	45	2000	6.3 x 5.7	493-3848-1-ND	.69	.59	.40	493-3848-2-ND	1,000	176.98	RPS1C390MCN1GS
	39	125	0.10	24	2500	6.3 x 5.7	493-3849-1-ND	.70	.60	.41	493-3849-2-ND	1,000	180.98	RPA1C390MCN1GS
	56	179	0.10	40	2300	8 x 6.7	493-3850-1-ND	.78	.67	.46	493-3850-2-ND	1,000	201.00	RPS1C560MCN1GS
	82	262	0.10	40	2300	8 x 6.7	493-3851-1-ND	.83	.70	.52	493-3851-2-ND	1,000	229.83	RPS1C820MCN1GS
	100	320	0.10	30	3200	10 x 7.7	493-3852-1-ND	1.04	.87	.64	493-3852-2-ND	500	166.57	RPS1C101MCN1GS
	150	480	0.10	30	3200	10 x 7.7	493-3853-1-ND	1.04	.87	.64	493-3853-2-ND	500	166.57	RPS1C151MCN1GS
	180	576	0.12	20	3700	8 x 11.7	493-3854-1-ND	1.07	.90	.66	493-3854-2-ND	500	170.97	RPS1C181MCN1GS
	220	704	0.12	20	3700	8 x 11.7	493-3855-1-ND	1.07	.90	.66	493-3855-2-ND	500	170.97	RPS1C221MCN1GS
330	792	0.12	16	4800	10 x 12.4	493-3856-1-ND	1.67	1.38	1.11	493-3856-2-ND	400	267.79	RPS1C331MCN1GS	

NE Series Aluminum Polymer Electrolytic Capacitors



Features: • By using Functional Polymer cathode, frequency and temperature characteristics are greatly improved • Low ESR at a high frequency range • High ripple current capability • Long life and high reliability
Applications: • Switching Power Supply and DC/DC Converter • Back up Power Supplies of CPU(VRM) • Miniature high Power Supply
Specifications: • Operating Temperature Range: -55°C ~ 105°C • Capacitance Tolerance: ± 20% • Leakage Current not to exceed the value specified

Size øD x L	ød	P	a
5 x 10	0.5	2.0	1.0
6.3 x 10	0.5	2.5	1.0
8 x 6	0.6	3.5	1.0
8 x 9	0.6	3.5	1.0
8 x 11.5	0.6	3.5	1.5

Rated Voltage	Rated Capacitance (μF, 120Hz)	Leakage Current (μA, 2min)	tanδ (120Hz)	ESR (mΩ, 100kHz)	Rated Ripple Current (mA, r.m.s.)	Case Size øDxL (mm)	Digi-Key Part No.	Cut Tape Price Each			Digi-Key Part No.	Tape and Reel		Nichicon Part No.
								1	10	100		Qty.	Pricing	
2.5	680	500	0.10	8	4900	8 x 6	493-3810-1-ND	.75	.64	.40	493-3810-2-ND	1,000	160.64	RNE0E681MDN1PX
6.3	1,200	1512	0.08	10	5700	8 x 9	493-3811-1-ND	.87	.75	.51	493-3811-2-ND	1,000	224.22	RNE0J122MDN1PX
							493-3812-1-ND	.69	.58	.37	493-3812-2-ND	2,000	138.38/M	RNE1A221MDS1PX
16	100	320	0.08	35	2300	5 x 10	493-3813-1-ND	.63	.54	.34	493-3813-2-ND	2,000	126.85/M	RNE1C101MDS1PX
							493-3814-1-ND	.84	.71	.52	493-3814-2-ND	1,000	232.11	RNE1C471MDN1PX

Digi-Reel® Most SMT cutdown parts are available on a Digi-Reel®. For Digi-Reel part number, change 1-ND to 6-ND or CT-ND to DKR-ND. See Digi-Key® Services on page 2 for additional information.

1716 (EU2011-EN) **Free shipping on orders over €65! All prices in euro and include duties.**