

DIODES General Purpose and Schottky Diodes Schottky Barrier Rectifiers (Cont.)



Table with columns: Fig., Max. Avg. Rectified Current (A), Max. Peak Reverse Voltage (V), Max. Surge Current (A), Max. Rev. Current @ 25°C (mA), Max. Peak Forward Voltage (V), Digi-Key Part No., Cut Tape Pricing (1, 10, 100), Digi-Key Part No., Tape and Reel (Qty., Pricing).

Fig. 10 — D2PAK

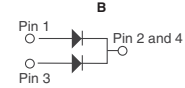
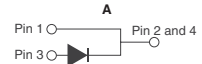
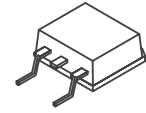


Fig. 11 — SOD-123



Fig. 12 — SOD-323



◆ RoHS Compliant † Tube ‡ Tested at ts10ms

(Continued)

Digi-Reel Most SMT cutdown parts are available on a Digi-Reel. For Digi-Reel part number, change 1-ND to 6-ND or CT-ND to DKR-ND. See Digi-Key Services on page 2 for additional information.

Free shipping on orders over €65! All prices in euro and include duties. (EU2011-EN) 1331