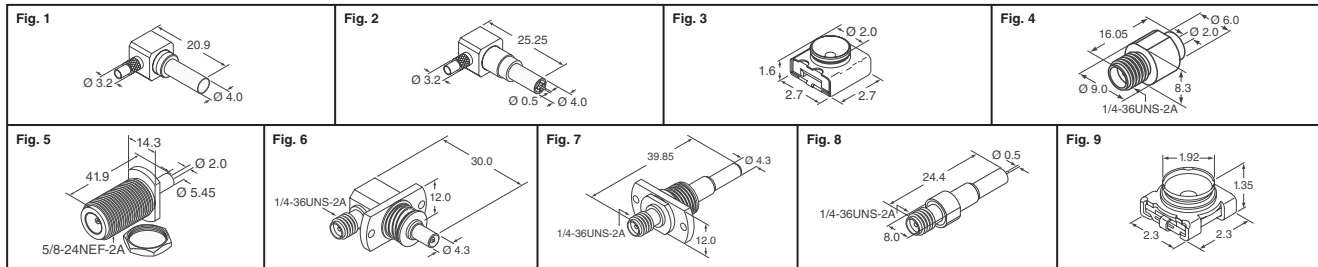




Subminiature Coaxial Switch Connectors MS-156 Series



A

Features:
 • Developed for inspection of high frequency circuits used in portable terminals
 • Verification of the circuit performance is accomplished by simply inserting the external plug in the board mounted receptacle

Specifications:
 • Operating Temperature Range: -40°C ~ 85°C • Rated Power: 2W • Frequency Range: DC ~ 6GHz (DC ~ 11GHz for MS-156C Series)
 • Contact Resistance: 100mΩ maximum @ 100mA maximum • Insulation Resistance: 1000MΩ @ 100VDC
 • Withstanding Voltage: No flashover or insulation breakdown @ 100VAC/ 1 minute

Material Specifications:
 • Shell: Phosphor Bronze; Gold plating • Insulator: Nylon
 • Common Terminal: Gold plating • Antenna Terminal: Gold plating

Fig.	Description	Digi-Key Part No.	Price Each			Hirose Part No.
			1	10	100	
1	Press Down Type Plug	H11378-ND	41.15	39.09	36.74	MS-156-C(LP)-1
2	Simplified Lock Type Plug	H11379-ND	30.05	28.55	26.83	MS-156-C(LP)-2
2	Plug	H11380-ND	47.87	45.58	42.75	MS-156-C(LP)-5
3	Receptacle without vacuum cap	H11669-ND	1.00	.82	.60	MS-156HF(01)
3	Receptacle without vacuum cap	H11669TR-ND		582.98/2,000		MS-156HF(20)
4	SMA Adapter for Plug Inspection	H11385-ND	87.78	83.40	78.38	MS-156R-HRMJ-1
5	SMA Adapter for Plug Inspection	H11386-ND	73.77	70.09	65.87	MS-156R-NJ-1
6	SMA Adapter Right Angle	H11396-ND	94.96	90.22	84.79	MS-156P-HRMJ-4
7	SMA Floating Type Adapter	H11397-ND	71.42	67.85	63.77	MS-156-HRMJ-12
8	SMA Simplified Lock Type Adapter	H11398-ND	21.86	21.14	18.95	MS-156-HRMJ-2
9	Receptacle	H11670CT-ND†	.64	.47	.38	MS-156C(20)
9	Receptacle	H11670TR-ND		437.24/2,000		MS-156C(20)

† Cut Tape

Ultra Miniature Snap-On Coaxial Connector PC Card Type II Mountable MMCX Type

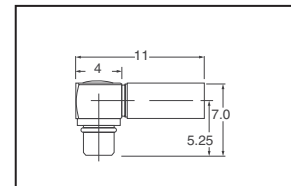


Features: Snap-on coupling mechanism makes it easy to engage and disengage. Low profile accommodates PCMCIA type II cards. The MMCX-LR-SMT is only 3.51mm when mounted on the bottom of a type II card. Designed for ultra thin cable such as RG-316/U (ø1.8), RG-316/U (ø2.59 max.) ø1.48 single shielded cable (one of the smallest available) and CO-9F-FH-SB (ø1.48) made by Hitachi Cable Ltd. Compatible with all industry standard MMCX connectors.

Specifications: • Nominal Characteristic Impedance: 50Ω • Operating

Temperature Range: -55°C ~ 85°C • Rated Frequency: DC ~ 6GHz • Insulation Resistance: 500MΩ minimum • Contact Resistance: 10mΩ maximum (center), 5mΩ maximum (outer)

Material: • Body: Brass with gold plating • Male center contact: Phosphor bronze with gold plating • Female Center Contact: Beryllium copper with gold plating • Insulator: PTFE • Fixing Ring: Beryllium copper (plug) with nickel plating • Crimp Sleeve: Copper with gold plating • Cover: Brass (plug) with gold plating



Cable Type	Digi-Key Part No.	Price Each			Hirose Part No.
		1	10	100	
		Right Angle Plug			
RG-316/U Type Coaxial Cable	H11469-ND	8.06	7.46	6.25	MMCX-LP-316/U(40)

SMA Coaxial Connectors HRM(V) Series



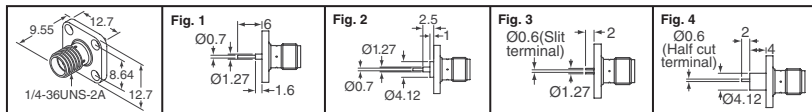
Features: Complete compatibility with SMA coaxial connectors, high degree of impedance matching and high durability

Specifications: • Nominal Characteristic Impedance: 50Ω • Operating Temperature Range: -55°C ~ 85°C • Frequency Range: DC ~ 18GHz • Insulation Resistance: 5000MΩ minimum @ 500VDC • Withstanding Voltage: No flashover or insulation breakdown @ 1,000 VAC/1 minute • Contact Resistance:

6mΩ maximum (center), 6mΩ maximum (outer) @ 100mA maximum • V.S.W.R.: 1.2 maximum for frequencies of DC ~ 10GHz; 1.3 maximum for frequencies of 10 ~ 18 GHz • Durability: 500 cycles

Material: • Shell: Stainless steel; passivated • Female center contact: Beryllium copper; gold plated • Center contact: Brass; gold plated • Insulator: PTFE

Fig.	Digi-Key Part No.	Price Each			Hirose Part No.
		1	10	100	
1	H11565-ND	3.88	3.22	2.41	HRM(V)-301S
2	H11566-ND	3.88	3.22	2.41	HRM(V)-302S
3	H11567-ND	4.07	3.37	2.53	HRM(V)-304S
4	H11564-ND	3.88	3.22	2.41	HRM(V)-306S



Microwave Coaxial Connectors with Switch SWD and SWF Type — Small Size and Low Profile



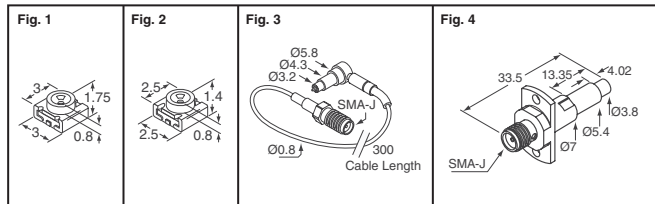
Features: • These small size, low profile coaxial connectors are very useful for characteristic measurement of cellular phones and microwave units • Easily possible to switch the line connection and disconnection by special probe • Surface mountable and reflow solderable

Specifications: • Operating Temperature Range: -40°C ~ 85°C (MM8430-2600RA1: -40°C ~ 90°C)

• Rated Voltage: 250 Vrms • Frequency Range: DC ~ 6GHz • Contact Resistance: MM8430-2600RA1: 25mΩ maximum; MM8430-2610RA1: 50mΩ maximum; MM8130-2600RA2: 70mΩ maximum • Insulation Resistance: 500MΩ • Withstanding Voltage: MM8430-2600RA1: No evidence of breakdown; MM8430-2610RA1 and MM8130-2600RA2: 300VAC

Fig.	Description	Digi-Key Part No.	Price Each			Murata Part No.
			1	25	100	
1	SWD Type	490-1062-1-ND†	.59	.46	.37	MM8430-2600RA1
	SWD Type	490-1062-2-ND‡	328.33/1,000			MM8430-2600RA1
	SWD Type	490-4980-1-ND†	.46	.36	.29	MM8430-2610RA1
	SWD Type	490-4980-2-ND‡	253.05/1,000			MM8430-2610RA1
	SWD Series Kit	490-5057-ND	41.48	—	—	M1KMM8430-SWD01
2	SWF Type	490-4981-1-ND†	.46	.36	.29	MM8130-2600RA2
	SWF Type	490-4981-2-ND‡	506.11/2,000			MM8130-2600RA2
	SWF Series Kit	490-5056-ND	47.41	—	—	M1KMM8130-SWF01
3	Manual Test Probe	490-4982-ND	29.23	27.15	26.10	MXHS830E3000
4	Auto Test Probe	490-4983-ND	72.98	67.77	65.17	MM126036

† Cut Tape ‡ Tape and Reel



Standardized Phono-Plugs

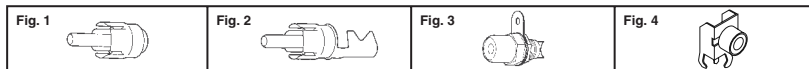


Fig.	Description	Digi-Key Part No.	Pricing		
			1	10	100
1	Conventional Type	561K-ND	.76	7.17	69.17
2	Strain Relief Lug Crimps to Wire Insulation	565K-ND	1.02	9.63	89.20
3	Panel Mount Jack Hex Base Type	576K-ND	1.78	16.74	159.12
4	Snap-Fit 90° PC Phono Jack	901K-ND	1.59	14.95	144.26

Digi-Reel® Most SMT cutdown parts are available on a Digi-Reel®. For Digi-Reel part number, change 1-ND to 6-ND or CT-ND to DKR-ND. See Digi-Key® Services on page 2 for additional information.

Free shipping on orders over €65! All prices in euro and include duties. (EU2011-EN) 477