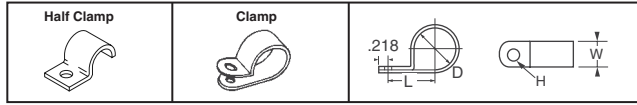




Metal Cable Clamps



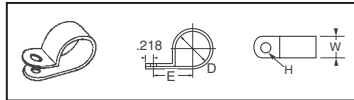
Dimensions – Inch				Digi-Key Part No.	Pricing	
D	L	W	H		10	100
Steel Half Clamps						
.125	.437	.500	.218	8140K-ND	2.08	20.48
.187	.437	.500	.218	8141K-ND	2.17	21.39
.250	.437	.500	.218	8142K-ND	2.33	22.48
.312	.500	.500	.218	8143K-ND	2.51	24.84
.375	.531	.625	.218	8144K-ND	2.93	28.23
.437	.562	.625	.218	8145K-ND	3.07	30.30
.500	.625	.625	.218	8146K-ND	3.85	36.96
.562	.687	.625	.218	8147K-ND	3.95	38.60
.625	.750	.625	.218	8148K-ND	4.13	39.39
.687	.812	.625	.218	8149K-ND	4.24	41.03
.750	.812	.625	.218	8150K-ND	4.41	42.29
.812	.875	.625	.218	8151K-ND	4.58	44.06
.875	.937	.750	.281	8152K-ND	4.99	48.12
.937	.968	.750	.281	8153K-ND	5.17	50.17
1.000	1.000	.750	.281	8154K-ND	11.35	106.90
Insulated Steel Half Clamps						
.187	.437	.500	.218	8160K-ND	5.60	53.87
.250	.500	.500	.218	8161K-ND	6.33	60.84
.312	.531	.625	.218	8162K-ND	7.16	68.72
.375	.562	.625	.218	8163K-ND	7.48	71.99
.437	.625	.625	.218	8164K-ND	8.45	81.14
.500	.687	.625	.218	8165K-ND	6.21	59.74
.562	.750	.625	.218	8166K-ND	6.42	61.75
.625	.812	.625	.218	8167K-ND	7.00	63.57
.687	.812	.625	.218	8168K-ND	6.82	65.32
.750	.875	.625	.218	8169K-ND	7.44	71.20
.812	.937	.750	.281	8170K-ND	11.78	111.25
.875	.968	.750	.281	8171K-ND	10.34	93.68
.937	1.000	.750	.281	8172K-ND	11.46	110.16
1.000	1.062	.750	.281	8173K-ND	10.78	103.62
Steel Clamps						
.250	.406	.500	.203	8101K-ND	2.56	24.97
.312	.437	.500	.203	8102K-ND	2.66	26.06
.375	.468	.500	.203	8103K-ND	2.76	26.30
.437	.500	.500	.203	8104K-ND	2.87	27.57
.500	.531	.500	.203	8105K-ND	3.02	29.21
.562	.562	.500	.203	8106K-ND	3.18	30.96
.625	.594	.500	.203	8107K-ND	3.29	32.17
.687	.625	.500	.203	8108K-ND	3.39	32.48
.750	.656	.500	.203	8109K-ND	3.49	33.58
.812	.687	.500	.203	8110K-ND	3.61	35.57
.875	.718	.500	.203	8111K-ND	3.73	36.30
.937	.750	.500	.203	8112K-ND	3.87	36.96
1.000	.781	.500	.203	8113K-ND	3.95	38.60
Insulated Steel Clamps						
.187	.406	.500	.203	8121K-ND	4.79	45.93
.250	.437	.500	.203	8122K-ND	4.94	47.57
.312	.468	.500	.203	8123K-ND	5.13	49.39
.375	.500	.500	.203	8124K-ND	5.30	51.26
.437	.531	.500	.203	8125K-ND	5.50	53.20
.500	.562	.500	.203	8126K-ND	5.70	55.20
.562	.594	.500	.203	8127K-ND	5.91	57.39
.625	.625	.500	.203	8128K-ND	6.49	59.03
.687	.656	.500	.203	8129K-ND	6.65	60.54
.750	.687	.500	.203	8130K-ND	6.46	62.17
.812	.718	.500	.203	8131K-ND	7.04	63.93
.875	.750	.500	.203	8132K-ND	7.25	66.30
.937	.781	.500	.203	8133K-ND	7.44	67.74
1.000	.812	.500	.203	8134K-ND	7.63	69.56

RoHS Compliant



Nylon Cable Clamps

Ideal for securing, insulating and routing cable wiring, piping, tubing, components and fibre optics. Made of .050" thick nylon 6/6, white.



Dimensions – Inch				Digi-Key Part No.	Pricing		
D	E	W	H		100	500	1,000
.125	.325	.375	.140	7620K-ND	9.39	30.30	37.14
.125	.325	.375	.203	7621K-ND	9.39	30.30	37.14
.187	.380	.375	.140	7622K-ND	9.57	32.42	37.63
.187	.380	.375	.203	7623K-ND	9.57	32.42	37.63
.250	.410	.375	.140	7624K-ND	9.70	32.42	38.66
.250	.410	.375	.203	7625K-ND	9.70	32.42	38.66
.312	.445	.375	.140	7626K-ND	9.82	33.93	40.35
.312	.445	.375	.203	7627K-ND	9.82	33.93	40.35
.375	.475	.375	.140	7628K-ND	10.12	33.93	42.97
.375	.475	.375	.203	7629K-ND	10.12	33.93	42.97
.437	.525	.375	.140	7630K-ND	11.03	36.66	44.79
.437	.525	.375	.203	7631K-ND	11.03	36.66	44.79
.500	.550	.375	.140	7632K-ND	11.46	37.27	46.18
.500	.550	.375	.203	7633K-ND	11.46	37.27	46.18
.562	.625	.500	.203	7634K-ND	17.02	55.14	70.29
.625	.660	.500	.203	7635K-ND	17.45	57.26	73.80
.750	.785	.500	.203	7636K-ND	20.73	66.35	84.71
.875	.845	.500	.203	7637K-ND	21.69	71.20	90.04
1.000	.910	.500	.203	7638K-ND	22.48	75.44	93.75
1.125	.970	.500	.203	7639K-ND	32.17	105.44	132.46
1.125	1.060	.500	.203	7640K-ND	34.24	114.53	143.86

Recessed Bumpers



Provides excellent traction and shock absorbing qualities.

Materials:
Fig. 1 and 2: Rubber, BUNA S
Fig. 3: Vinyl

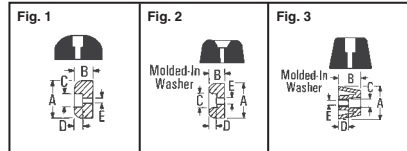


Fig.	Dimensions – Inch					Screw Size	Digi-Key Part No.	Pricing	
	A	B	C	D	E			10	100
1	.500	.250	.250	.125	.125	#4	720K-ND	2.77	26.30
	.625	.312	.250	.187	.125	#4	721K-ND	4.41	42.29
	.718	.437	.250	.218	.125	#4	722K-ND	8.83	84.84
2	.937	.375	.375	.187	.187	#8	723K-ND	8.47	81.14
	.562	.375	.218	.187	.115	#4	727K-ND	8.36	75.93
3	.687	.250	.343	.125	.155	#6	724K-ND†	6.92	62.84
	.750	.437	.265	.250	.148	#6	728K-ND	8.89	85.39
	.875	.312	.406	.187	.187	#8	725K-ND†	12.77	116.17
	.937	.625	.359	.297	.174	#8	729K-ND	13.95	126.83
	1.062	.437	.468	.234	.200	#10	726K-ND†	15.91	144.28

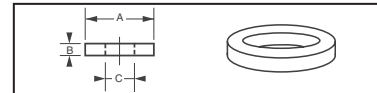
† Gray — all others black

Flat Washers



Fibre: Commercial per ASTM D710, Grade CH

Nylon: Grade 6/6 per ASTM D4066

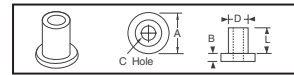


O.D. A	Dimensions – Inch		I.D. C	Digi-Key Part No.	Pricing	
	Thick B				100	500
Nylon Material — #2 Screw Size						
.250	.032		.098	3347K-ND	5.76	19.69
Fibre Material — #4 Screw Size						
.250	.032		.120	3116K-ND	5.76	19.69
.312	.032		.120	348K-ND	5.76	19.69
.375	.032		.120	3117K-ND	6.12	20.30
.250	.047		.120	3154K-ND	5.76	19.69
.312	.047		.120	3155K-ND	5.76	19.69
.375	.047		.120	3156K-ND	6.42	22.42
.250	.062		.120	3368K-ND	5.76	19.69
.312	.062		.120	3196K-ND	6.12	20.30
.375	.062		.120	3197K-ND	6.12	20.30
Nylon Material — #4 Screw Size						
.250	.032		.120	3348K-ND	5.76	19.69
.312	.032		.120	3359K-ND	7.09	22.42
.375	.032		.120	3118K-ND	7.09	23.94
.250	.047		.120	345K-ND	7.09	22.42
.312	.047		.120	3157K-ND	6.12	20.30
.375	.047		.120	3158K-ND	6.12	20.30
.250	.062		.120	3358K-ND	5.76	19.69
.312	.062		.120	3198K-ND	7.09	23.94
.375	.062		.120	3200K-ND	7.09	22.42
Fibre Material — #6 Screw Size						
.250	.032		.140	3119K-ND	5.76	19.69
.312	.032		.140	3120K-ND	5.76	19.69
.375	.032		.140	3121K-ND	6.12	20.30
.250	.047		.140	3159K-ND	5.76	19.69
.312	.047		.140	3160K-ND	5.76	19.69
.375	.047		.140	3161K-ND	6.42	22.42
.250	.062		.140	3369K-ND	5.76	19.69
.312	.062		.140	3370K-ND	5.76	19.69
.375	.062		.140	3201K-ND	6.12	20.30
Nylon Material — #6 Screw Size						
.250	.032		.140	3122K-ND	5.76	19.69
.312	.032		.140	3349K-ND	5.76	19.69
.375	.032		.140	3123K-ND	7.09	23.94
.250	.047		.140	3162K-ND	5.76	19.69
.312	.047		.140	346K-ND	7.75	24.84
.375	.047		.140	3163K-ND	6.12	20.30
.250	.062		.140	3360K-ND	5.76	19.69
.312	.062		.140	3361K-ND	7.09	23.94
.375	.062		.140	3202K-ND	7.09	22.42
Fibre Material — #8 Screw Size						
.312	.032		.171	3124K-ND	5.76	19.69

Nylon Shoulder Washers/Bushings



Material: Nylon, Grades 6/6 per ASTM D4066



L	Dimensions – Inch				Digi-Key Part No.	Pricing	
	A	B	C	D		100	500
#4 Screw Size							
.031	.218	.040	.115	.135	3049K-ND	9.39	30.30
.047	.250	.032	.115	.185	7681K-ND	11.03	36.66
.093	.235	.047	.115	.145	3053K-ND	15.70	54.23
.125	.235	.047	.115	.145	3102K-ND	15.70	52.42
.180	.235	.047	.115	.145	3103K-ND	15.70	52.42
.250	.235	.047	.115	.145	340K-ND	17.02	56.66
#6 Screw Size							
.032	.385	.062	.145	.240	7682K-ND	12.00	41.51
.032	.250	.062					